

# User's Manual

## DMT-DD

### Touch Panel Driver

#### Important

- Please read the Precautions and this User's Manual carefully to familiarize yourself with safe and effective usage.
- The software described in this document is provided based on the Software License Agreement, and can be used only when you agree with the contents of the agreement.

- 
- The latest User's Manual is available for download from our website:  
<http://www.eizoglobal.com>
- 



# About DMT-DD

DMT-DD is a driver required for operating EIZO resistive touch panel monitors in Windows 8 / Windows 8.1.

- 
- 1.EIZO Corporation shall retain the copyright to this document. Reprinting this document in part or in whole without prior permission from EIZO Corporation is strictly prohibited.
  - 2.The contents of this document are subject to change without notice.
  - 3.While we take great care in producing this document, if you find any errors or omissions, please contact EIZO.
  - 4.Notwithstanding the above, EIZO shall not assume any responsibility for damages, loss of profits, and the like, resulting from the use of this document.
- 

Internet Explorer, Microsoft, and Windows are registered trademarks of Microsoft Corporation in the United States and other countries.

DDT-DD is a registered trademark of DMC Co, Ltd.

EIZO and the EIZO logo are registered trademarks of EIZO Corporation in Japan and other countries.

Other company and product names are trademarks or registered trademarks of their respective companies.

---

# Contents

About DMT-DD .....	2
Contents .....	3
Chapter 1 Outline and Requirements .....	4
Precautions .....	4
Chapter 2 Setup .....	5
2-1. Installing DMT-DD .....	5
2-2. Installing the Touch Panel Driver .....	8
2-3. Uninstalling the Touch Panel Driver .....	13
2-4. Registering a Configuration File .....	15
2-5. Setting up a Touch Panel .....	16
2-6. Calibrating the Touch Panel .....	19
2-7. Uninstalling DMT-DD .....	20
Chapter 3 Basic Settings .....	22
3-1. Software Settings .....	22
3-2. Touch Input Setting .....	26
3-3. Right-click Setting .....	30
3-4. Hardware Information .....	31
3-5. Configuration File .....	32
Chapter 4 Touch Setting .....	33
Chapter 5 Mouse Setting .....	35
Chapter 6 Tool Setting .....	36

# Chapter 1 Outline and Requirements

## ● System Outline

DMT-DD provides the functions necessary to operate a touch panel. The functions are as follows:

- Install and Uninstall of the touch panel driver
- Configuration of the touch panel driver

## ● Operating Conditions

OS	<ul style="list-style-type: none"><li>• Windows 8.1 (Windows 8 (32 bit / 64 bit))</li><li>• Windows 8 (Windows 8 (32 bit / 64 bit))</li></ul>
Interface	<ul style="list-style-type: none"><li>• USB</li><li>• RS-232C</li></ul>
Monitor	<ul style="list-style-type: none"><li>• Resistive touch panel monitor</li></ul>

### Attention

- System-builder version of Windows 8 / 8.1 is not supported.

## ● System Requirements

Software	<ul style="list-style-type: none"><li>• .Net Framework 3.5</li></ul>
Hard Disk	<ul style="list-style-type: none"><li>• Approximately 10MB of free space / data file capacity on the system drive</li></ul>

### Note

- “(Limited) Touch Support” may be indicated in the system properties.

## Precautions

- Follow the instructions in this document when using this software. The software may not operate properly if you do not use it as instructed.
- Only use this software within the prescribed operating conditions. Otherwise, the software may not operate properly. Also, the software may not operate properly in certain system environments even when the operating conditions are satisfied.
- Avoid using this software in environments with other mouse emulation software, or software with similar functions installed. Otherwise, the software may not operate properly.
- If a previous version of this software is already installed, be sure to uninstall it before installing this software. If you perform an overwrite installation, the software may not operate properly.
- EIZO shall not be liable in any way for any issues that may arise from using this software. Be sure to back up your system before installing this software.

# Chapter 2 Setup

## 2-1. Installing DMT-DD

### Attention

- If you are reinstalling DMT-DD, restart your computer after uninstalling, and then install.

### 1. Connect the monitor to your computer.

For details about connecting the computer and monitor, refer to the User's Manual of the monitor.  
If you use a RS-232C cable, connect the RS-232C port of the monitor to the COM port of the computer.

### Attention

- Do not use a conversion adapter, etc., to connect the monitor to the computer. This may prevent the touch panel from operating properly.
- If you use a USB cable, install DMT-DD before connecting the monitor to the computer.

### 2. Plug the power cord into a power outlet with the power connector.

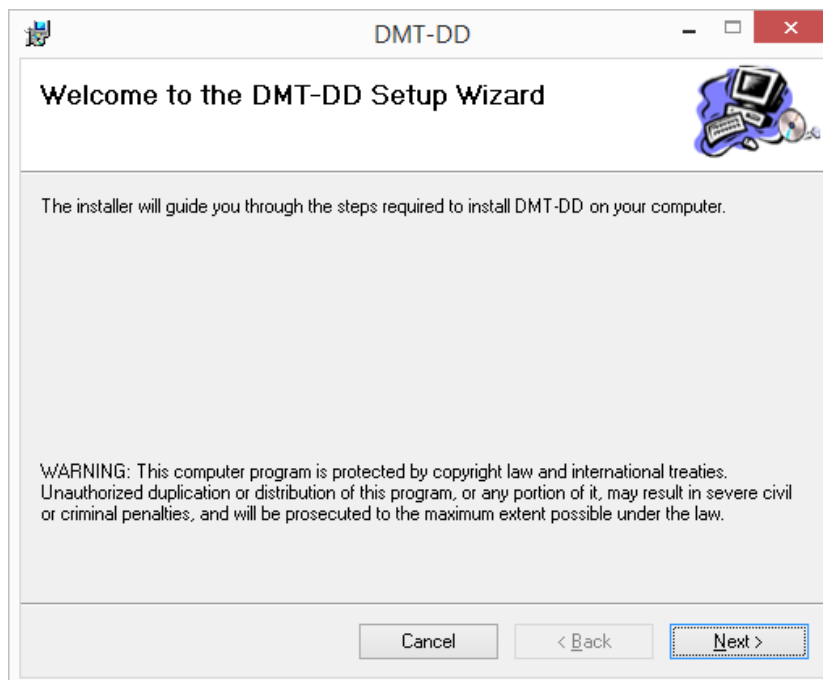
### 3. Turn on the monitor.

### 4. Turn on the computer, and log in with administrative privileges.

For information on user account privilege settings, contact your system administrator.

### 5. The installer starts up.

The "Welcome to the DMT-DD Setup Wizard" window will appear.



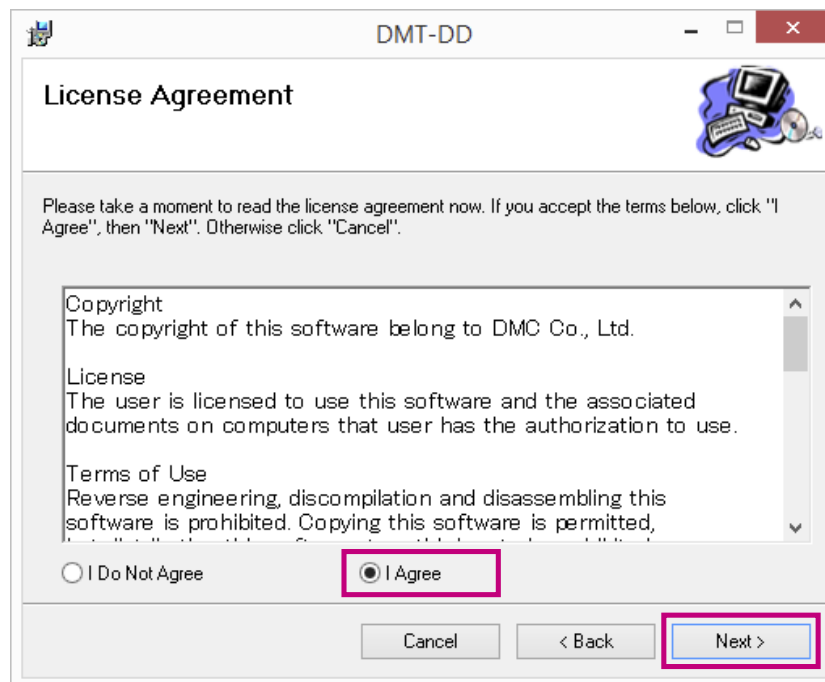
### Note

- If you install from the EIZO website, use the following procedure.
  1. Extract the downloaded file.
  2. Double-click "DMT-DDSetup.msi".

## 6. Click “Next”.

The “License Agreement” window will appear.

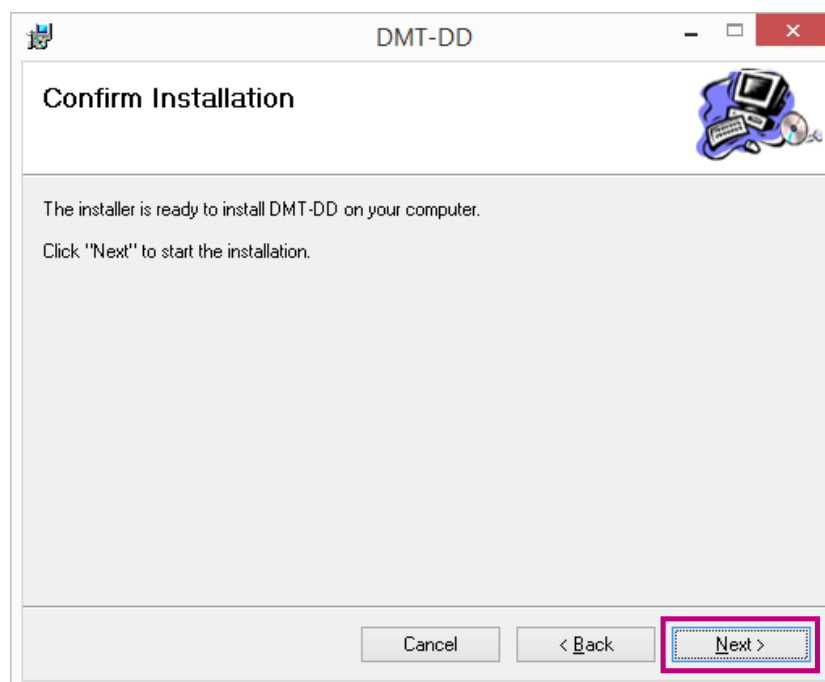
## 7. Read the License Agreement. If you accept the terms of the agreement, select “I Agree”, and then click “Next”.



The “Confirm Installation” window will appear.

## 8. Click “Next”.

The installation will start.



---

**Note**

- The window below may appear several times during the installation. Click “Install”.



---

The “Installation Complete” window will appear.

## 9. Click “Close”.

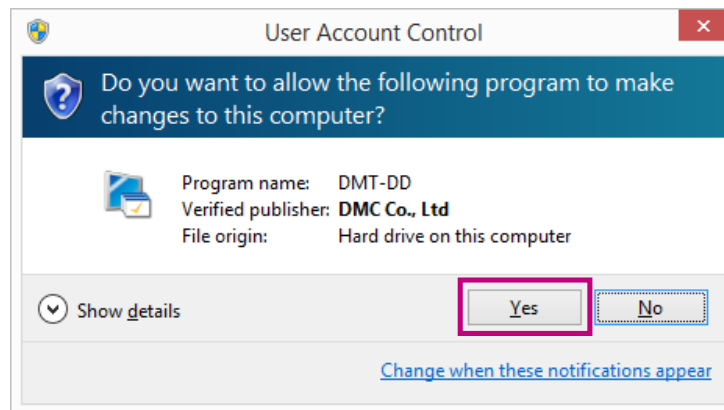
Installation is completed at this point.

## 2-2. Installing the Touch Panel Driver

When performing the installation, be sure the touch panel is connected.

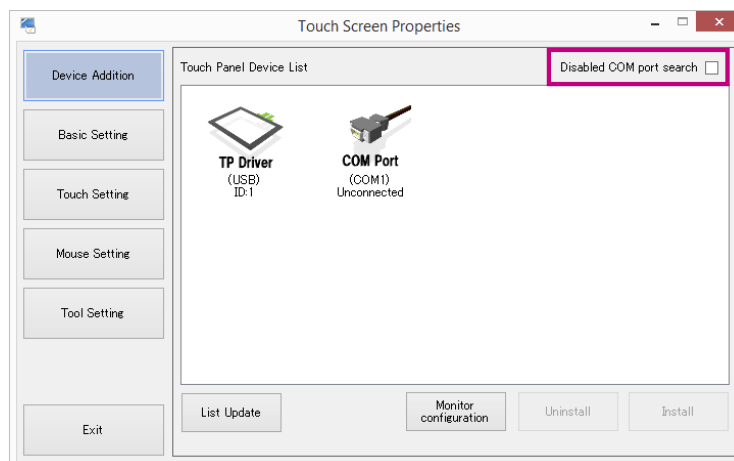
### Attention

- The touch panel setting tool requires a user account with administrative privileges in order to install the touch panel driver. For information on user account privilege settings, contact your system administrator.
- Depending on the user account control settings, the following window may appear. Click “Yes”.



### Note

- If you connect by USB, the USB touch panel driver will be automatically installed.
- When the COM port is connected, an automatic search will be performed to check if the COM port and touch panel controller are connected. To disable this search, in “Device Addition”, select “COM port search Disabled”.

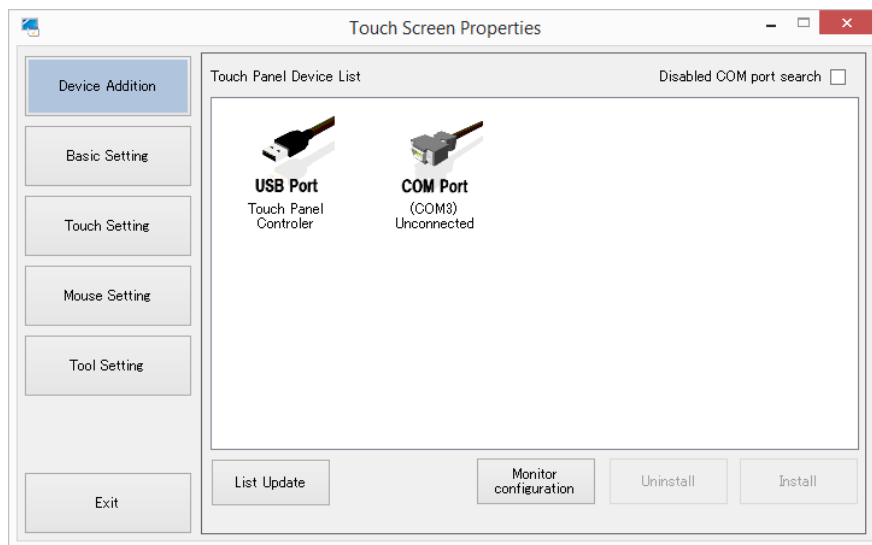




## 1. Launch DMT-DD.





The “Touch Panel Setting Tool” window will appear.

The icon of each connected USB touch panel controller, connectable COM port, and installed driver, is displayed in the “Touch Panel Device List”.



### Note

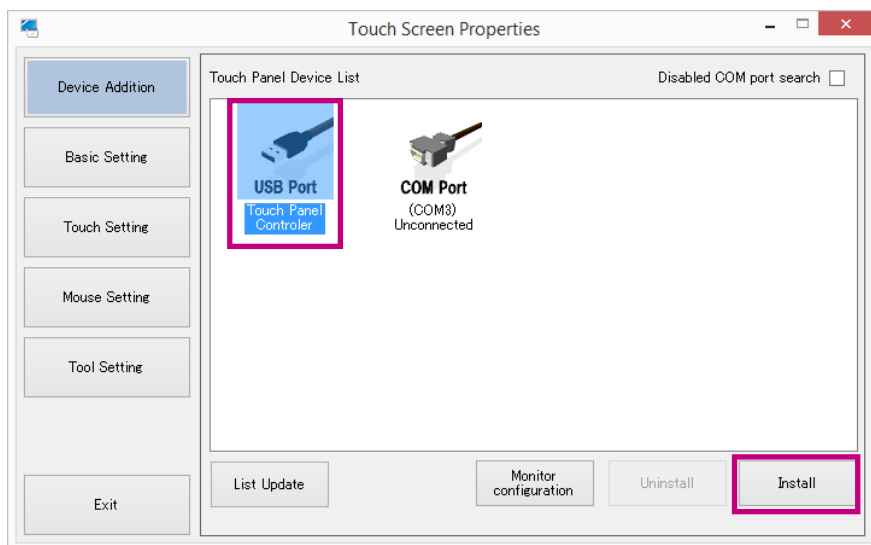
- When you connect or disconnect a USB connected touch panel controller, the “Touch Panel Device List” will be updated automatically.
- The “Touch Panel Device List” will not be updated automatically during an installation or uninstallation. To update the list, click “List Update”.
- If DMT-DD was installed successfully, a shortcut is created on the desktop. You can launch DMT-DD by double-clicking on the shortcut.
- You can also launch DMT-DD from the following program file.
  - 32 bit: System Drive\Program Files\DMT-DD\bin\DMT-DD.exe
  - 64 bit: System Drive\Program Files(x86)\DMT-DD\bin\DMT-DD.exe
- The distance between the icons will depend on the settings of your OS.
- The icons will appear as below.

Connection Type	Icon	Status of the touch panel driver
USB	 USB Port Touch Panel Controller	Before installation <sup>*1</sup>
	 TP Driver (USB) ID:1	After installation
COM Port VCP Port	 COM Port (COM1) Unconnected	Before installation
	 TP Driver (COMx) ID:1	After installation

<sup>\*1</sup> This icon appears only if the USB cable is connected before installing DMT-DD.

## 2. Select the device to install.

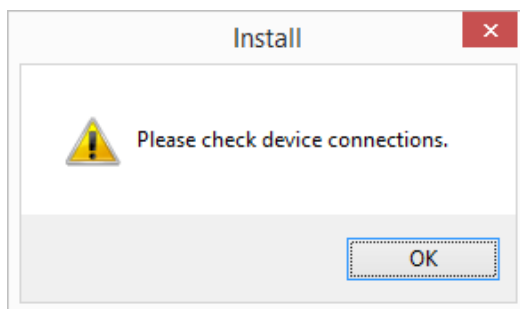
Select the icon of the device for which the touch panel driver is to be installed from the Touch Panel Device List. Or, touch the screen of monitor for which you intend to install the touch panel driver. The icon connected with the monitor that you touched will be selected.



---

### Attention

- When using the COM port (RS-232C) for the connection, the installation cannot be started if connection with the controller is not recognized when “Install” is clicked. Check the COM port connection.

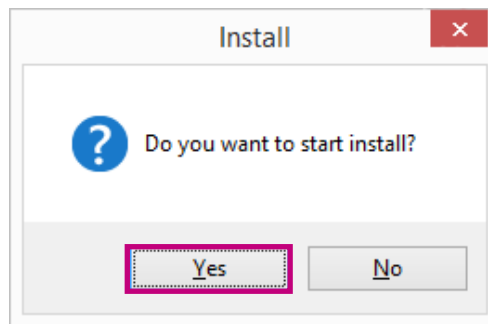


## 3. Click “Install”.

The confirmation window will appear.

#### 4. Click “Yes”.

Installation will start.

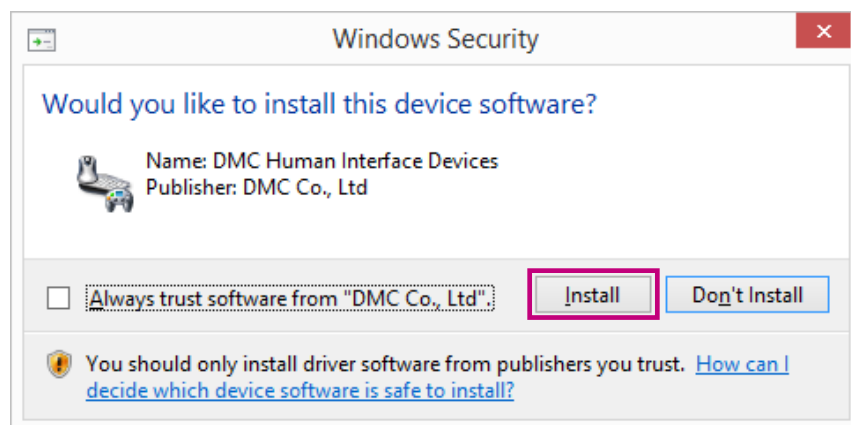


The “Installation has been completed” window will appear.

---

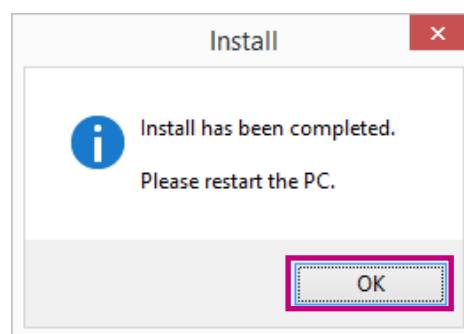
#### Note

- The following window will appear on the initial installation. Click “Install”.

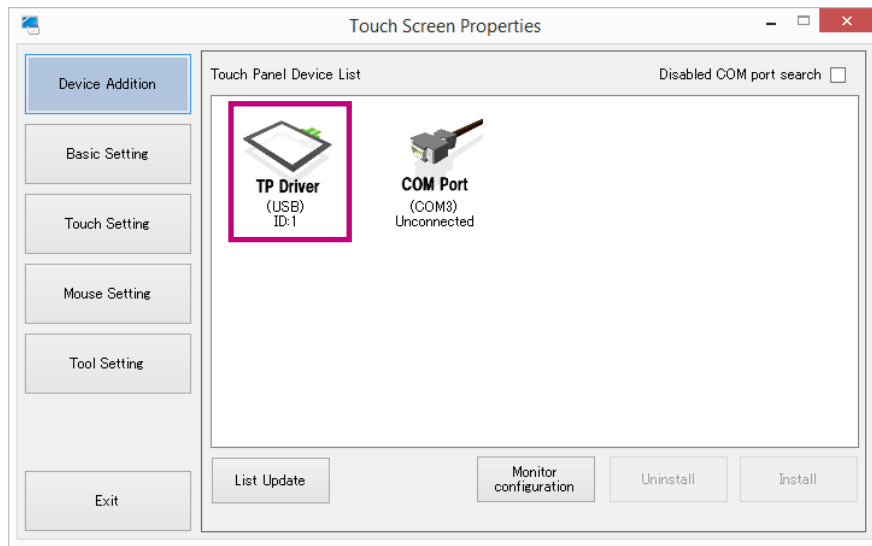


#### 5. Click “OK”.

Installation is completed at this point.



Once installation is completed, the existing icon in the “Touch Panel Driver List” will be replaced with the “Installed” icon.



## 6. Restart the computer.

## 2-3. Uninstalling the Touch Panel Driver

### Attention

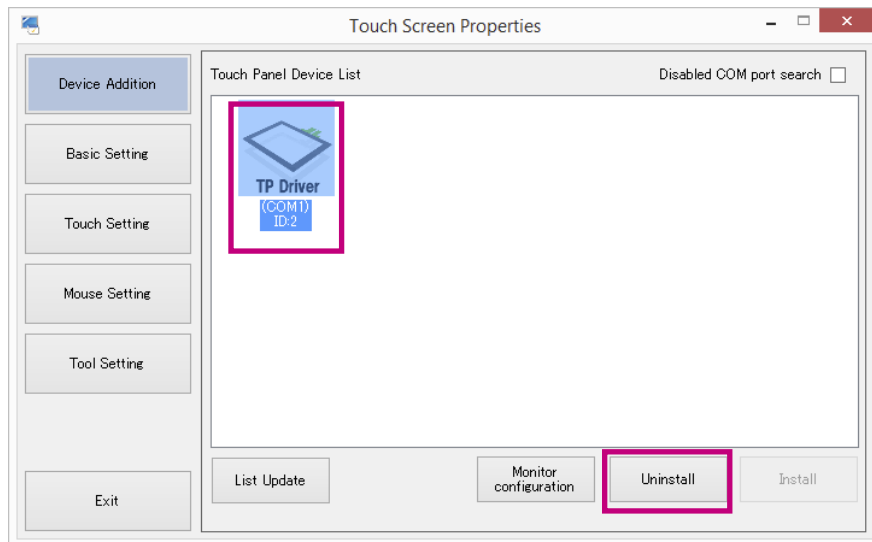
- The USB connection touch panel driver cannot be uninstalled from the touch panel setting tool. When you uninstall DMT-DD, the touch panel driver will be automatically uninstalled (Refer to “2-3. Uninstalling the Touch Panel Driver” (page 13)).

### 1. Launch DMT-DD.

The “Touch Panel Setting Tool” window will appear.

### 2. Select a device to uninstall.

Select the icon of the device for which the touch panel driver is to be uninstalled from the Touch Panel Device List. Or, touch the screen of the monitor for which the touch panel driver is to be uninstalled. The touch panel driver of the monitor that you touched is selected.

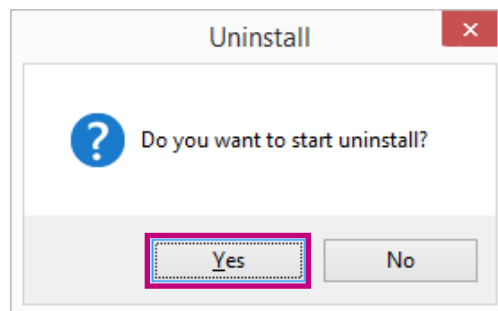


### 3. Select “Uninstall”.

The confirmation window will appear.

### 4. Click “Yes”.

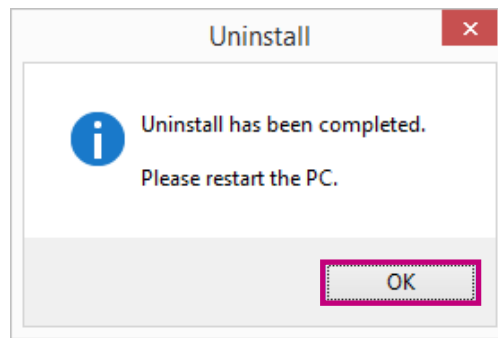
Uninstallation will start.



The “Uninstallation has been completed.” window will appear.

## 5. Click “OK”.

Uninstallation is completed at this point.



## 6. Restart the computer.

## 2-4. Registering a Configuration File

Register a configuration file according to the touch panel input method.

### Attention

- By default, no configuration files are registered. When no configuration files have been registered, touch input (Touch.mfd) is selected.

**1. In “Basic Setting” - “Device Select”, select the touch panel driver for which a configuration file is to be registered.**

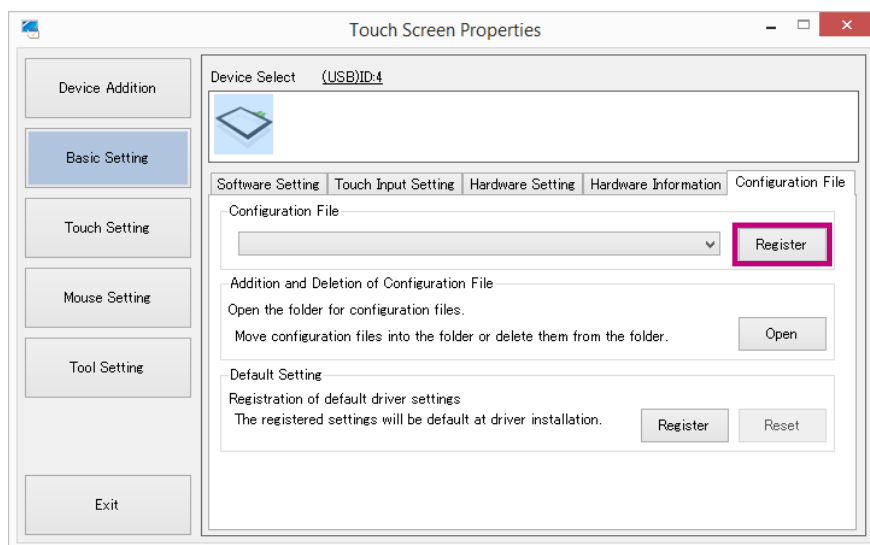
**2. In the “Configuration File” tab, select a file according to the input method from the “Configuration File” pull-down menu.**

Select a configuration file according to whether you will use touch input or mouse input.

Method of input	File name
When using touch input	Touch.mfd
When using mouse input	Mouse.mfd

**3. Click “Register”.**

The registered settings will be used as the default settings when installing a touch panel driver.



## 2-5. Setting up a Touch Panel

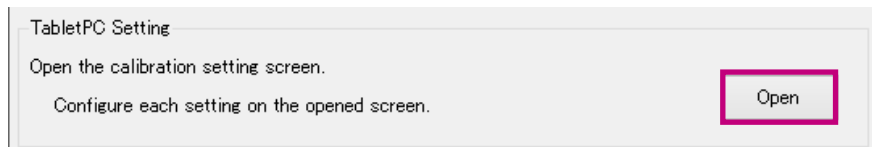
### ● When using touch input

#### Attention

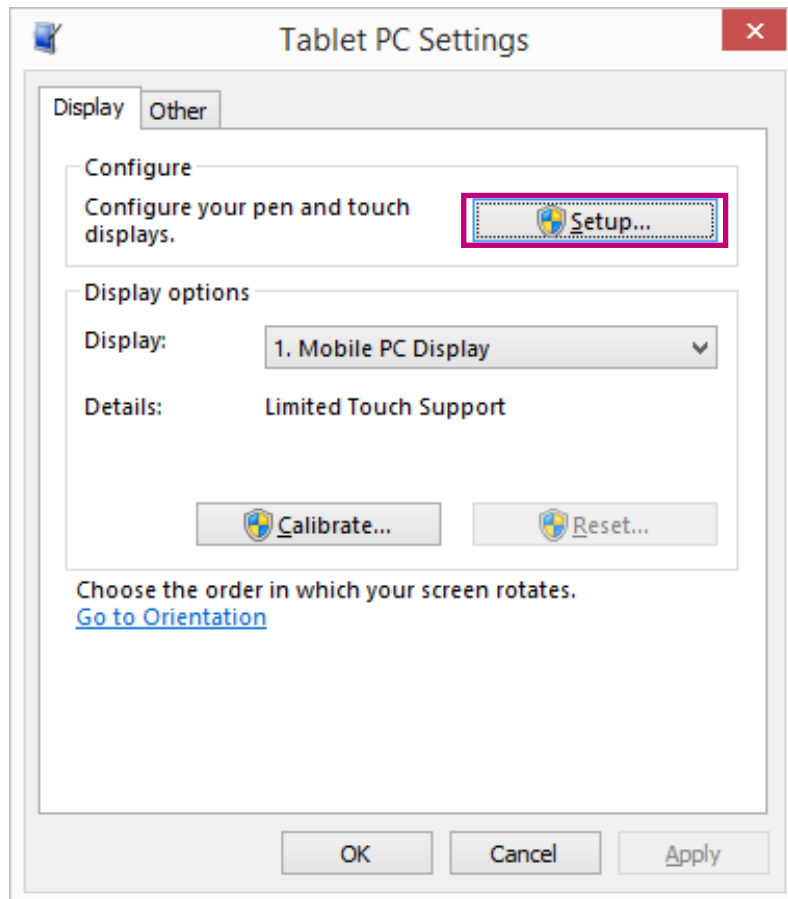
- When using an environment in which multiple monitors are connected
  - Touch input cannot operate properly.
  - Touch input cannot be used for multiple monitors. It cannot operate properly.

### 1. In “Touch Settings” - “Tablet PC Settings”, click “Open”.

The windows standard “Tablet PC Settings” window will appear.

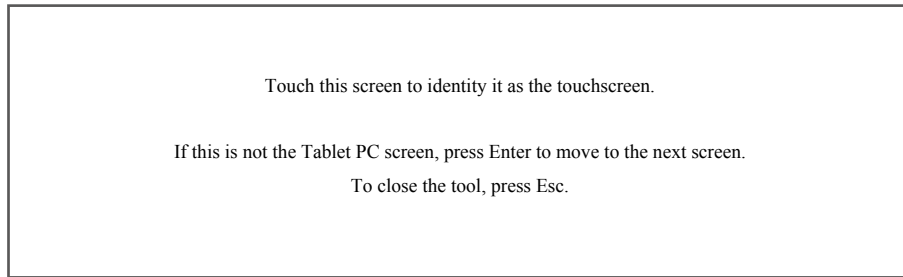


### 2. Select the “Display” tab, and under “Configure”, click “Setup”.





### 3. Touch the monitor screen on which the message below is appearing.



After you touch the monitor screen, the same message will appear on the next screen.

Once the configuration is completed, the cursor will appear when you touch a touch panel monitor.

---

**Note**

- If the monitor is not a touch panel, press “ENTER” on the keyboard. A message will appear on the next screen.
- 

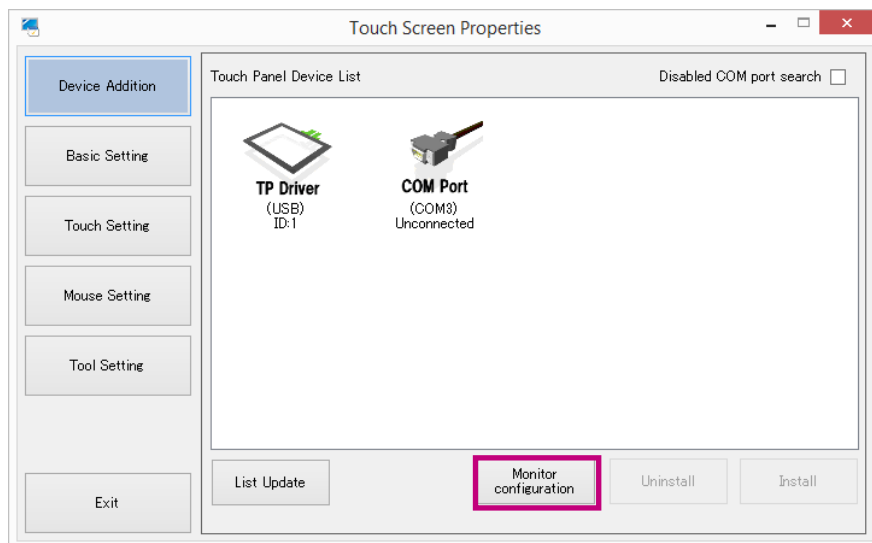
### 4. Once the configuration is completed, touch the touch panel monitor.

The cursor will appear on the touch panel monitor.

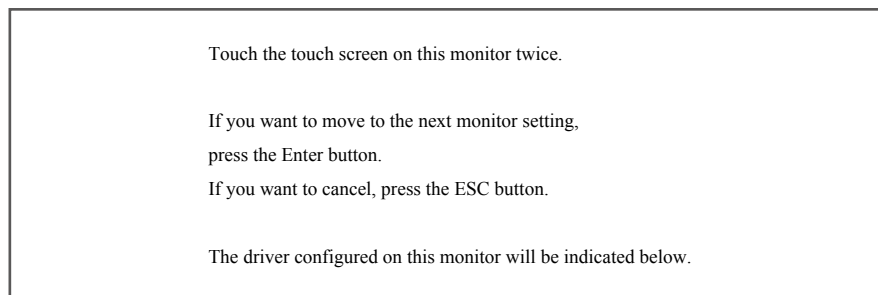
## ● When using mouse input

This function needs to be executed for environments which have multiple connected monitors.

### 1. In “Device Addition”, click “Monitor configuration”.

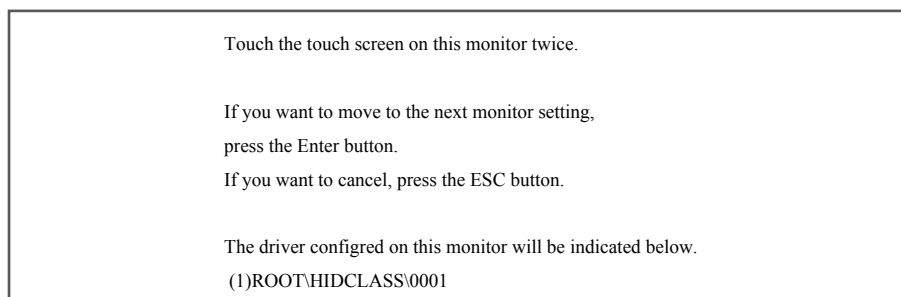


The following window will appear, starting from the top leftmost monitor icon in the “Touch Panel Device List”.



### 2. Touch the touch panel twice.

The touched touch panel will be indicated on the screen.



### 3. Press “Enter”.

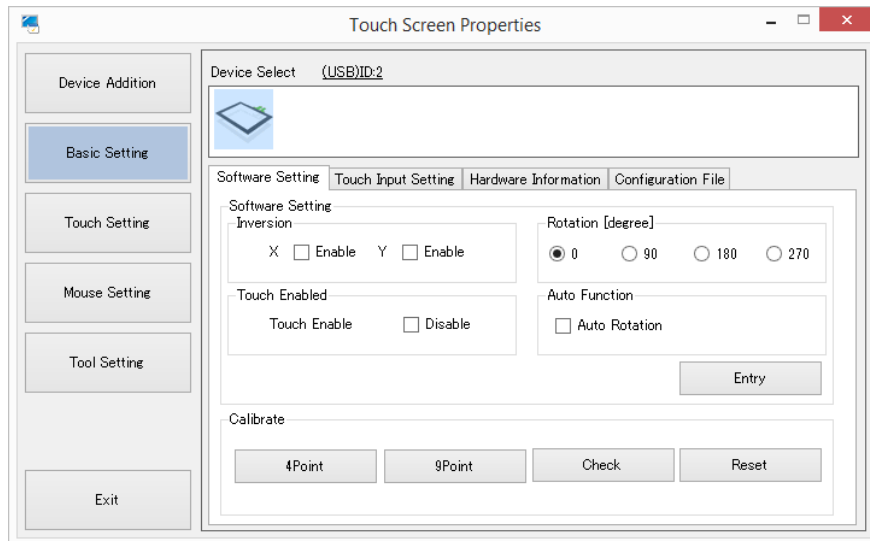
If there are multiple monitors, the window in step 1 will appear on the next monitor. Repeat the setting procedure from step 1 for each monitor.

Press “ESC” if you want to cancel midway through the procedure.

## 2-6. Calibrating the Touch Panel

By performing calibration, you can align the touched position with the cursor position.

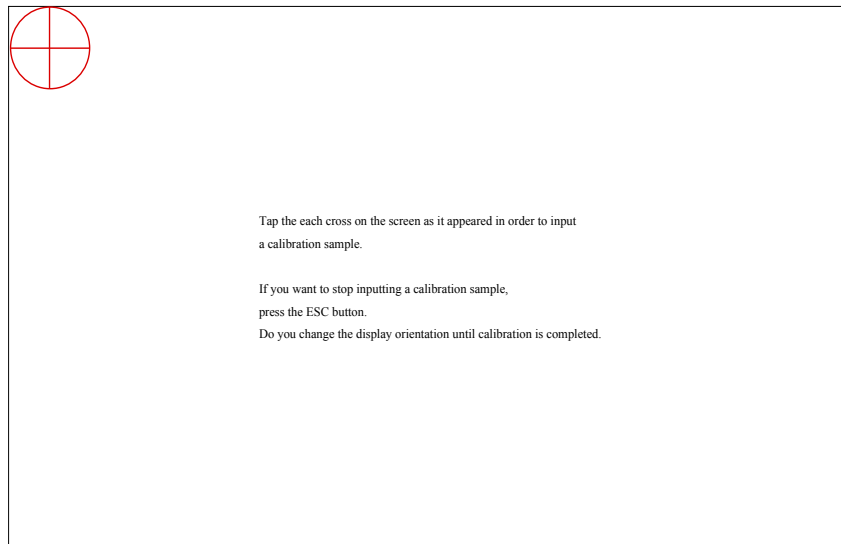
### 1. In “Basic Settings”, select the “Software Settings” tab.



### 2. In the “Device Select” window, select the touch panel driver.

### 3. Under “Calibrate”, click “4Point Calibration” or “9Point Calibration”.

The calibration window will appear.



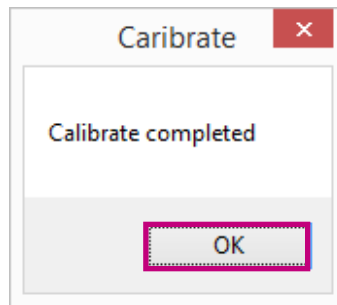
### 4. Touch the center of the marker.

### 5. The next marker will appear. Touch the markers as they appear.

After all the marks are touched, the calibration will be finished.

The “Calibration completed” window will appear.

## 6. Click “OK”.



## 2-7. Uninstalling DMT-DD

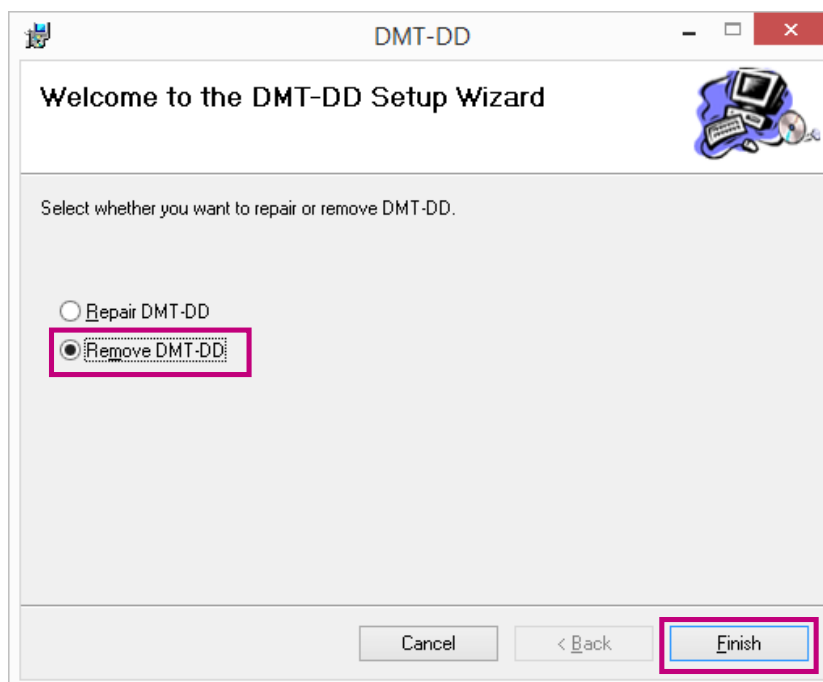
### Attention

- When you uninstall DMT-DD, the touch panel driver will be automatically uninstalled.
- If the Resident function is enabled, uninstall may fail. Disable the Resident function when performing the uninstall. (Refer to “[Resident function](#)” (page 36))

### 1. Double-click “DMT-DDSetup.msi”.

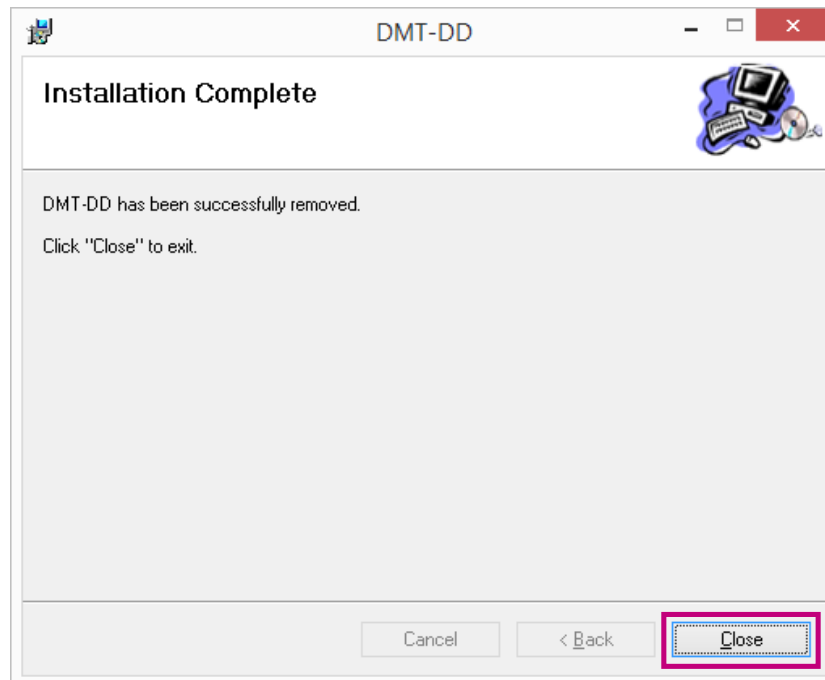
The installer starts up. The “Welcome to the DMT-DD Setup Wizard” window will appear.

### 2. Select “Remove DMT-DD”, and click “Finish”.



The “Installation Complete” window will appear.

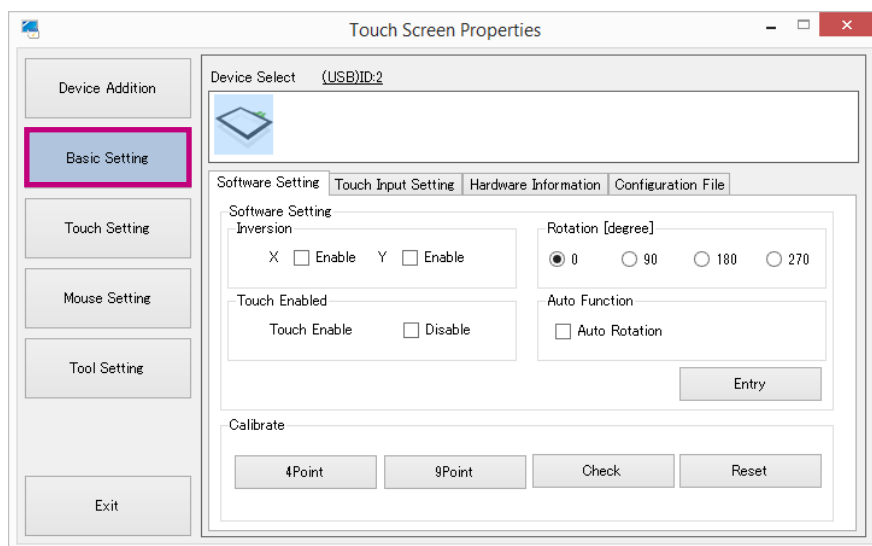
### 3. Click “Close”.



### 4. Uninstallation is completed at this point.

## Chapter 3 Basic Settings

You can configure or perform maintenance for the touch panel driver and touch panel controller individually.



Select the touch panel driver or touch panel controller from “Device Select”.

Or, you can touch the screen of the monitor you intend to configure to select the touch panel driver or touch panel controller.

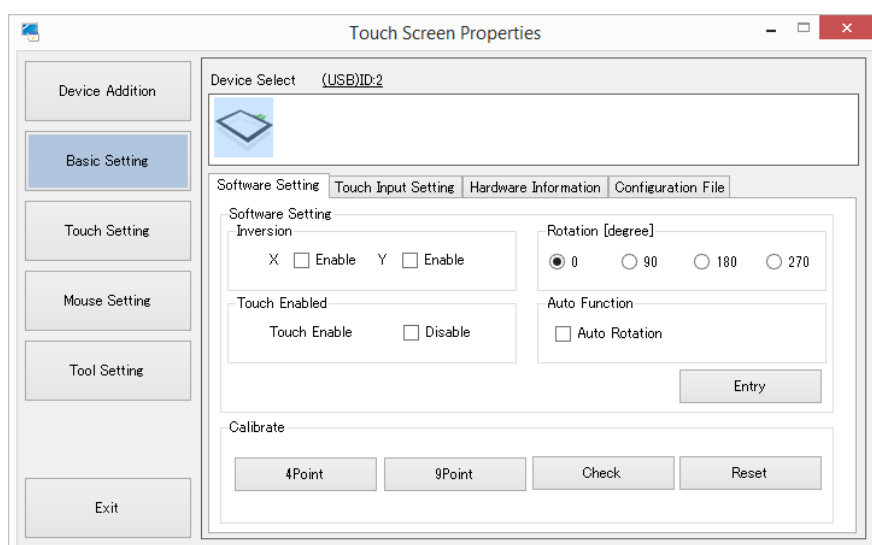
### 3-1. Software Settings

In “Basic Settings”, select the “Software Settings” tab.

You can configure settings for the touch panel driver or touch panel controller currently being selected.

#### Attention

- If you execute the “Auto Function” and “Calibrate” functions, it is necessary to complete setup of “Monitor configuration” or “Tablet PC Settings”. (Refer to “2-5. Setting up a Touch Panel” (page 16))



## Software Settings

### ■ Inversion

- X-axis

Default setting: Not enabled

If enabled, X-axis coordinates will be inversely outputted on touch.

- Y-axis

Default setting: Not enabled

If enabled, Y-axis coordinates will be inversely outputted on touch.

### ■ Rotation

Default setting: 0 degree

X-axis and Y-axis coordinates will be outputted in rotation of 0, 90, 180, and 270 degrees on touch.

### ■ Touch Enabled

Default setting: Not enabled

You can disable touch input by selecting "Disable".

### ■ Auto Function

- Auto Rotation

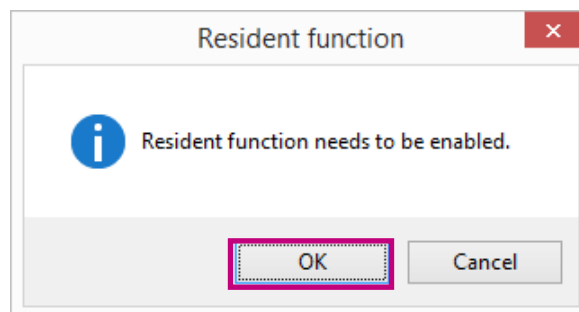
Default setting: Not enabled

If selected, the automatic detection of the screen rotation performed by the resident function will be enabled.

---

#### ■ Attention

- This function can only be enabled when using mouse input. (Refer to ["3-5. Configuration File"](#) (page 32))
- If the resident function is disabled during registration, the following window will appear when performing registration. Click "OK".



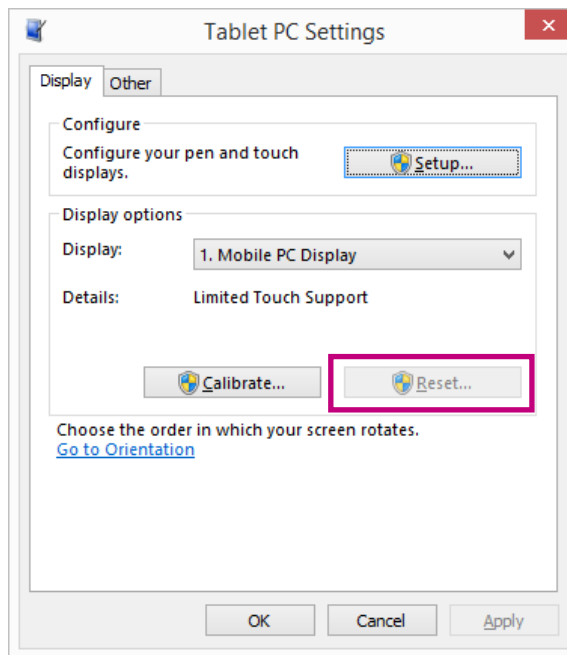
## Calibration

You can calibrate the touch panel.

If you are using a resistive touch panel controller, always ensure to perform “Calibration”.

### Attention

- Setup of “Monitor Configuration” / “Tablet PC Settings” needs to be completed before executing “Calibration”. Setup of “Tablet PC Configuration” needs to be completed when using touch input. (Refer to “2-5. Setting up a Touch Panel” (page 16))
- If you want to perform calibration with this “Touch Panel Settings Tool”, do not use the Windows standard calibration function. If the settings have already been performed, a reset is required. In the Windows standard “Tablet PC Settings”, click “Reset”.

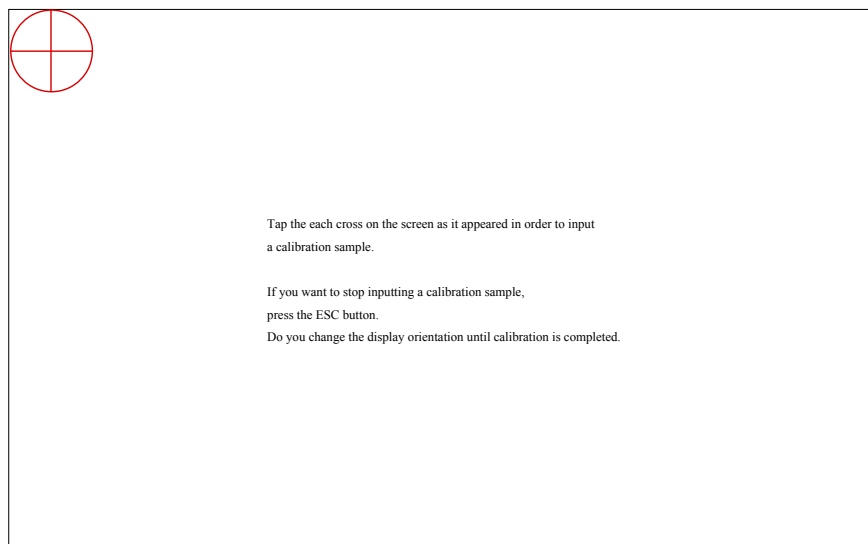


## ■4-point or 9-point Calibration

Calibrating the touch panel allows you to align the touched position and cursor position.

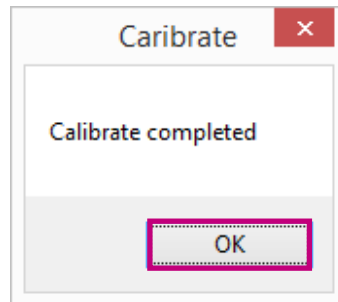
1. Select the touch panel driver from the Device Select window.
2. Under “Calibrate”, click “4Point Calibration” or “9Point Calibration”.

The calibration window will appear.





3. Touch the center of the marker. The next marker will appear.
4. Touch the markers as they appear. After all the marks are touched, the calibration will be finished.  
The “Calibration completed” window will appear.
5. Click “OK”.

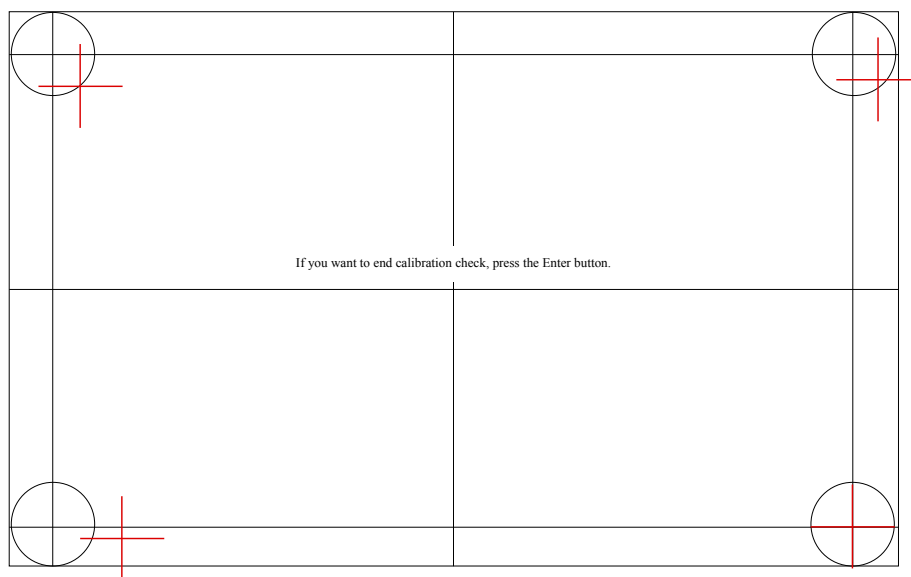


#### ■Reset

If you want to reset the calibration result, click “Reset”.

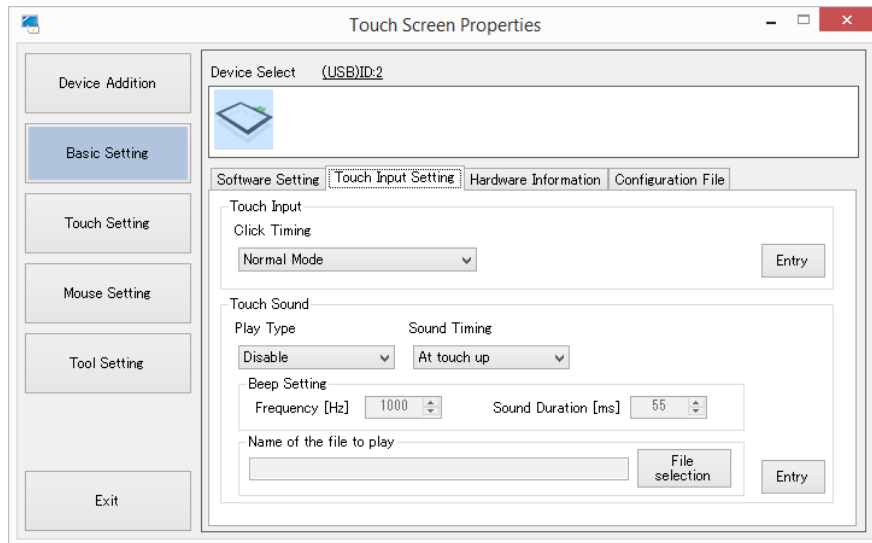
#### ■Check

You can check the calibration data. The ideal points will be indicated with blue while the touched calibration points will be indicated in red. Press “Enter” on the keyboard to finish the check.



## 3-2. Touch Input Setting

In “Basic Settings”, select the “Touch Input Setting” tab.



### Touch Input

#### Default setting: Normal Mode

You can configure the touch input actions. After selecting each setting, click “Entry”.

#### ■ Tap Notification Timing

- **Normal Mode**  
Touch down will cause touch down notification, touch up will cause touch up notification.
- **Click at touch up**  
Touch up will cause tap (touch down, touch up) notification.  
For touch input (Touch.mfd) too, the pointer will change into a cursor.
- **Click at touch down**  
Touch down will cause tap (touch down, touch up) notification.  
For touch input (Touch.mfd) too, the pointer will change into a cursor.

---

#### Attention

- For touch input (Touch.mfd), if “Click at touch up” or “Click at touch down” is selected, right click by long touch will not work.
-

## **Touch Sound**

Touch sound of the driver can be configured.  
Select the setting, and Click “Entry”.

### **■Replay Method**

- **Disabled**  
No touch sound.
- **Hardware replay**  
BEEP sounds on the motherboard.
- **Software replay**  
BEEP sounds from the speaker.
- **File replay**  
Specified wav file will sound from the speaker.

### **■Sound Timing**

- **At touch up**  
Touch sound will play at touch up.
- **At touch down**  
Touch sound will play at touch down.
- **During touch down**  
Touch sound will play for the duration of touch down.

### **■Frequency (Hz)**

Default setting: 1000 Hz  
Available range: 37 Hz to 32767 Hz  
Touch sound frequency can be configured.

### **■Sound Duration (ms)**

Default setting: 55 ms  
Available range: 1 ms to 5000 ms  
Touch sound duration can be configured.  
The available duration range is 1 ms to 5000 ms.

## ■ Name of the file to play

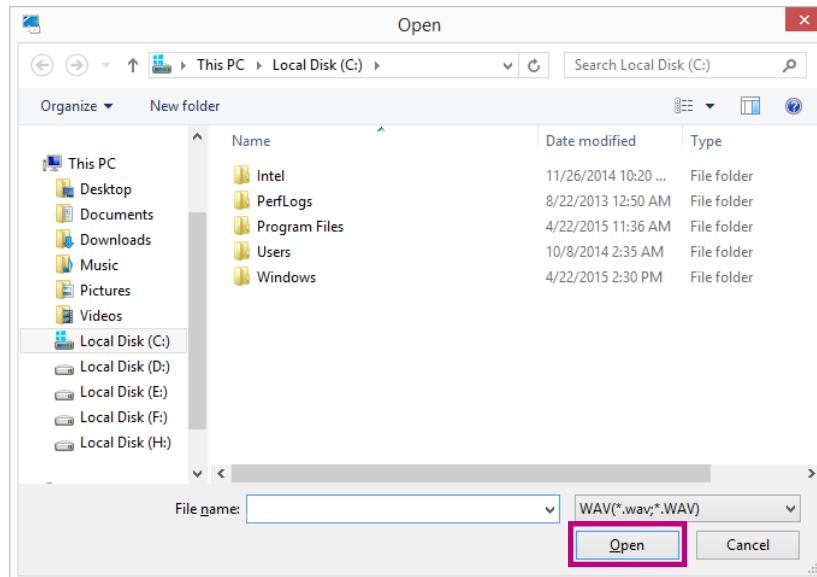
Path of the wav file to be played will be indicated.

1. Click “File selection”.

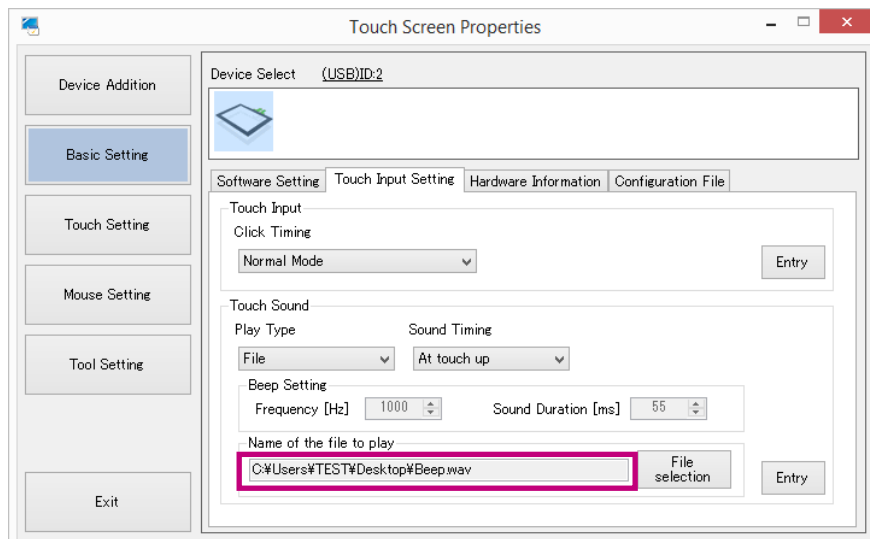
The “File selection” window will appear.



2. Select the wav file. Click “Open”.



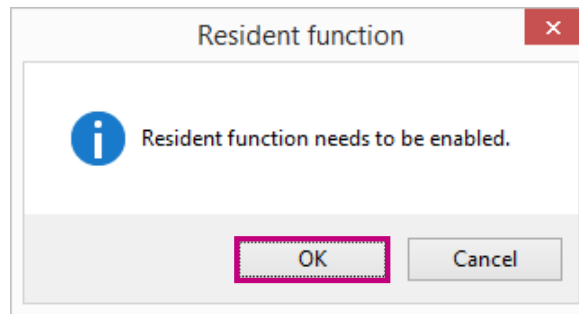
The path of the wav file will be indicated in “Name of the file to play”.



---

**Attention****About the Touch Sound**

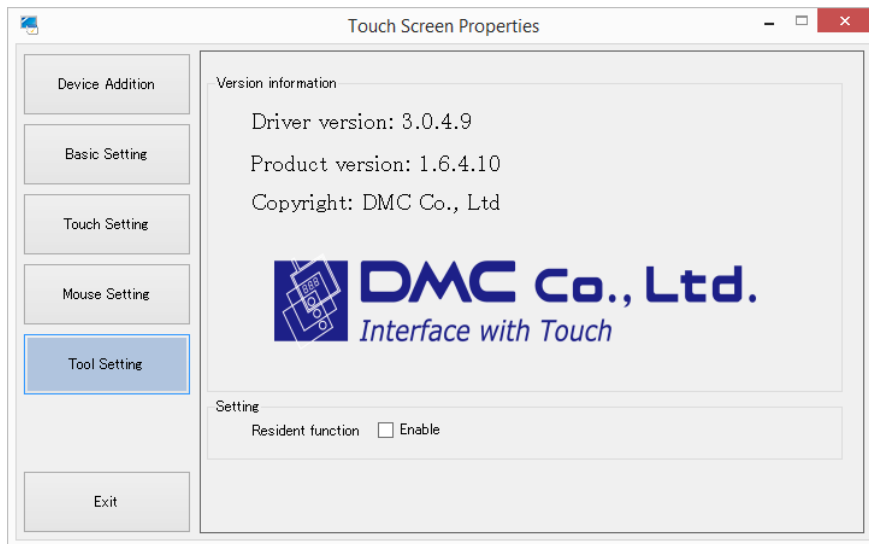
- For “Software replay” and “File replay”, Resident function needs to be enabled.
- If the resident function is disabled, the following window will appear when registering touch sound settings. Click “OK”.



---

**Note**

- Settings for Resident function can be configured in the “Tool Setting” window. (Refer to “[Chapter 6 Tool Setting](#)” (page 36))

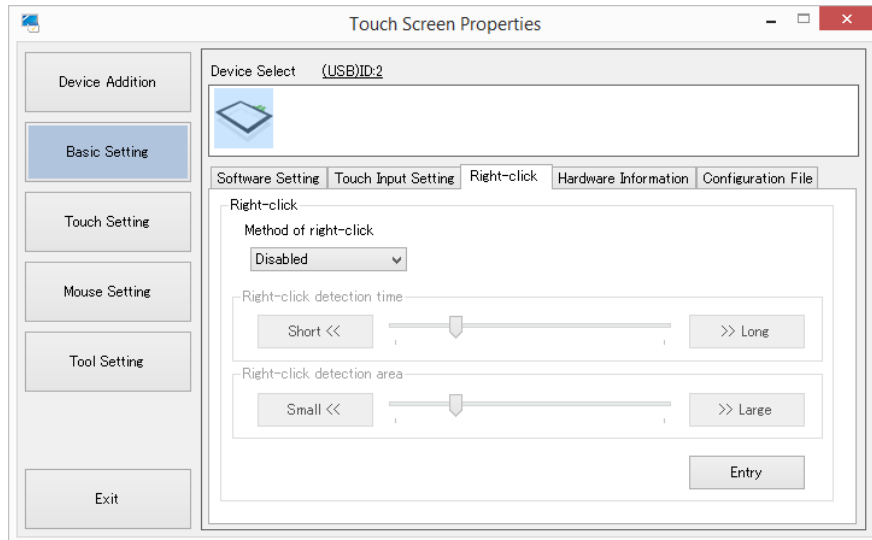


## 3-3. Right-click Setting

In “Basic Settings”, select the “Right-click” tab.

### Attention

- This setting tab will only appear if mouse input is available (the Mouse.mfd file is registered).



### Method of input

Default setting: Disabled

- **Disabled**  
No right-click input.
- **Long touch**  
Touch and hold the finger down on the touch panel to cause right-click input.
- **2-point touch**  
This method is not currently available.

### Right-click detection time

Default setting: 300 ms / minimum: 100 ms / maximum: 1000 ms

Right-click will be caused if the touch duration exceeds the specified time.

### Right-click detection area

Default setting: 300 / minimum: 100 / maximum: 1000

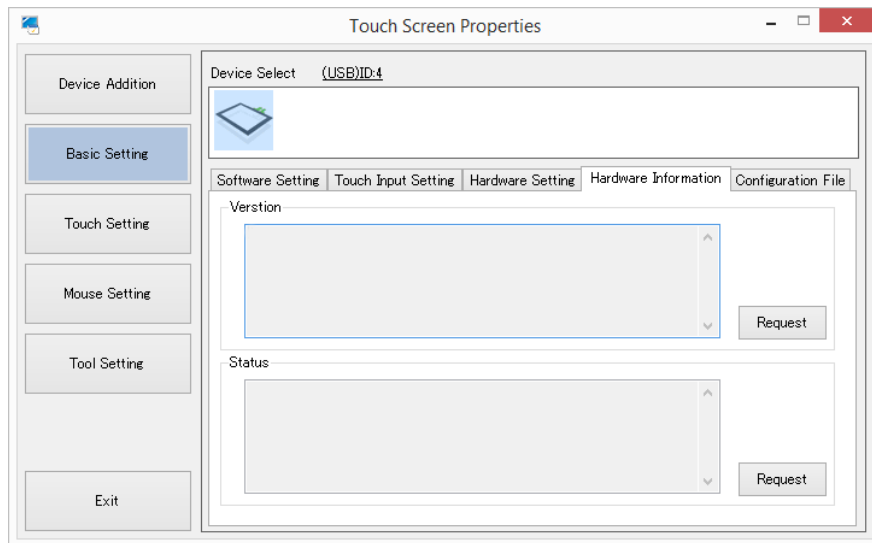
If the touching finger moves further than the specified right click area from the initial touch position, right-click will not be caused.

### Attention

- The “Right-click detection time” / “Right-click detection area” settings are available only if method of right-click is long touch.

## 3-4. Hardware Information

In “Basic Settings”, select the “Hardware Information” tab.



### **Version**

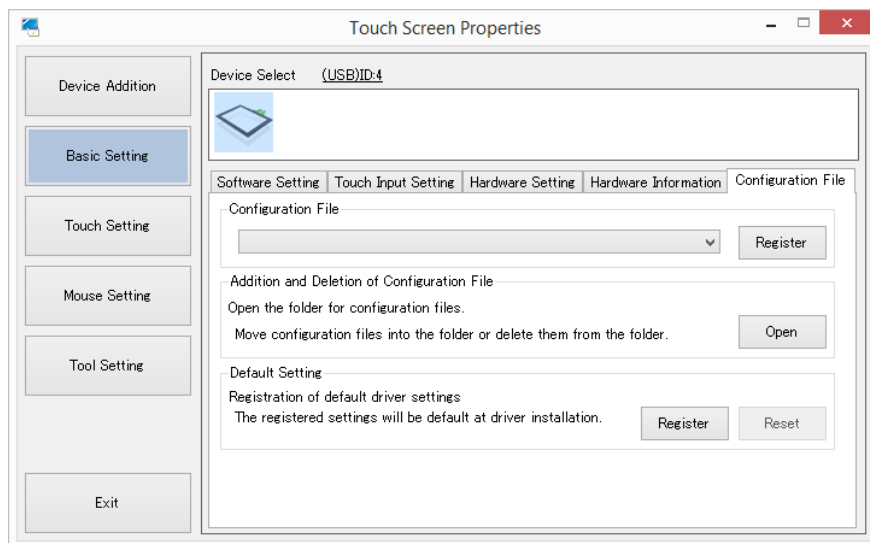
You can check the version of the touch panel driver or touch panel controller being selected.  
Click “Request” to display the version of the connected touch panel controller.

### **Status**

You can check the status of the touch panel driver or touch panel controller being selected.  
Click “Request” to display the status.

## 3-5. Configuration File

In “Basic Settings”, select the “Configuration File” tab.



### Configuration File

Default setting: Not registered

You can change the configuration file of the touch panel driver or touch panel controller being selected. Select a file according to the input method from the “Configuration File” pull-down menu, and then click “Register”.

Method of input	File name
When using touch input	Touch.mfd
When using mouse input	Mouse.mfd

#### Note

- By default, no “Configuration File” is registered. When no configuration files have been registered, touch input is selected. When you want to use mouse input, select the “Mouse.mfd” file.

### Adding or Removing a Configuration File

Configuration files can be added, removed, or moved in Windows Explorer.

Click “Open” in “Adding or Removing a Configuration File”. The configuration file save folder will open.

### Default Setting

The settings of the selected touch panel driver can be registered as default settings at the initial connection.

Select “Device Addition” – “Software Setting” – “Touch Input Setting” – “Right-click Setting” – “Configuration File”, and then click “Register”. The registered settings will be used as the default setting on installing a touch panel driver.

If you wish to delete the registered settings, click “Reset”.

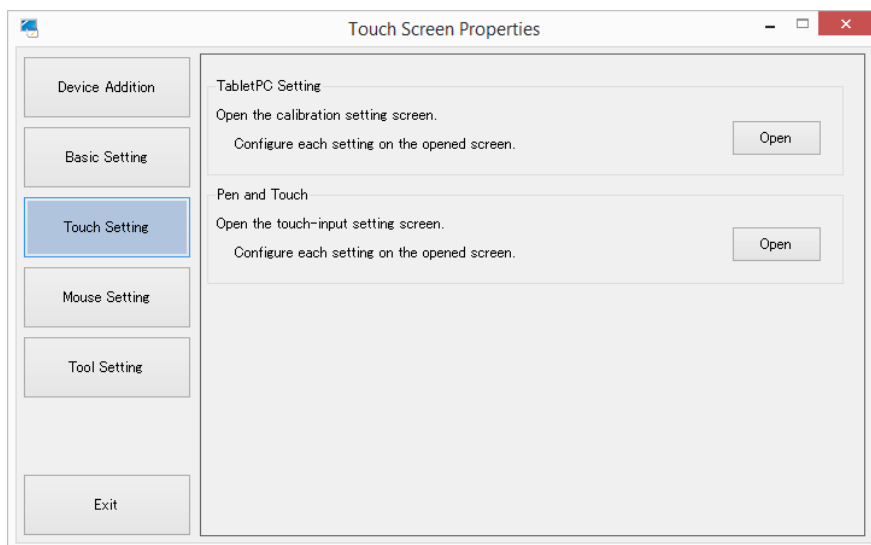
#### Attention

When using a multi-monitor environment at default settings, the finger may not be followed correctly in “Calibration” due to individual differences between touch panels. In this case, perform “Calibration” for each touch panel controller.



# Chapter 4 Touch Setting

Select “Touch Setting”.

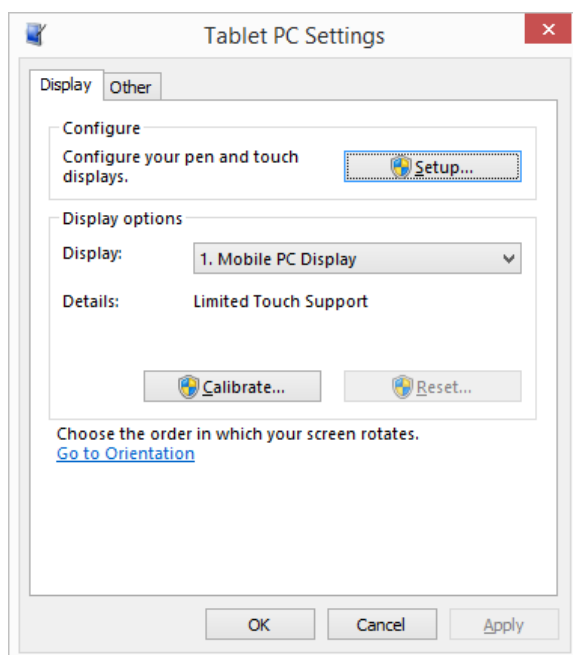


## Tablet PC Setting

Touch monitor configuration and calibration can be performed.

1. Under “Tablet PC Settings”, click “Open”.

The Windows standard “Tablet PC Settings” window will appear.

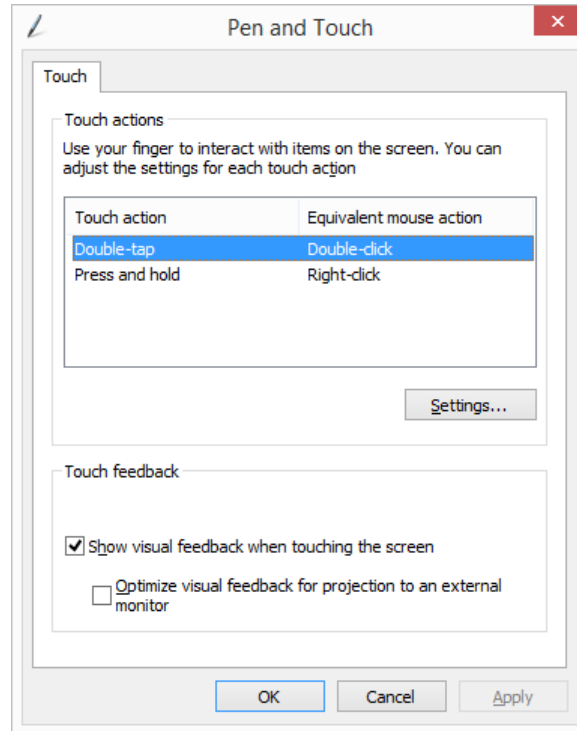


## Pen and Touch

This calls up the various settings in Windows relating to touch input. Touch input can be calibrated.

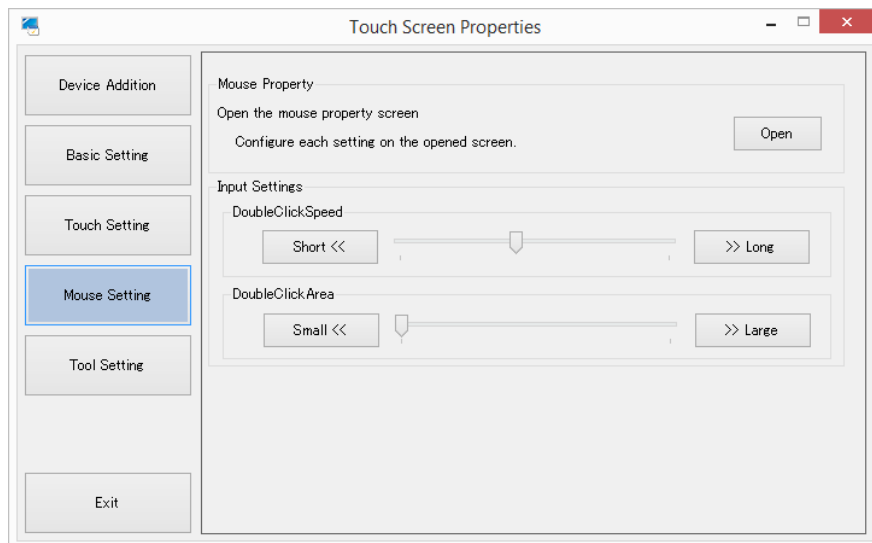
1. Under “Pen and Touch”, click “Open”.

The Windows standard “Pen and Touch” window will appear.



# Chapter 5 Mouse Setting

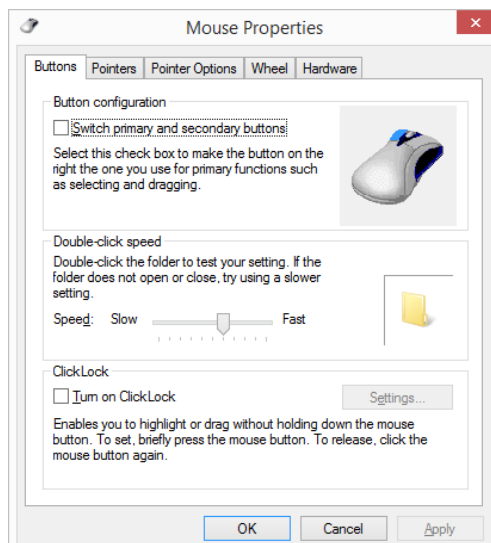
Select “Mouse Setting”.



## Mouse Properties

1. Under “Mouse Properties”, click “Open”.

The Windows standard “Mouse Properties” window will appear.



## Input Settings

### - Double-click speed

The interval between 2 successive clicks that is recognized as a double-click can be set.

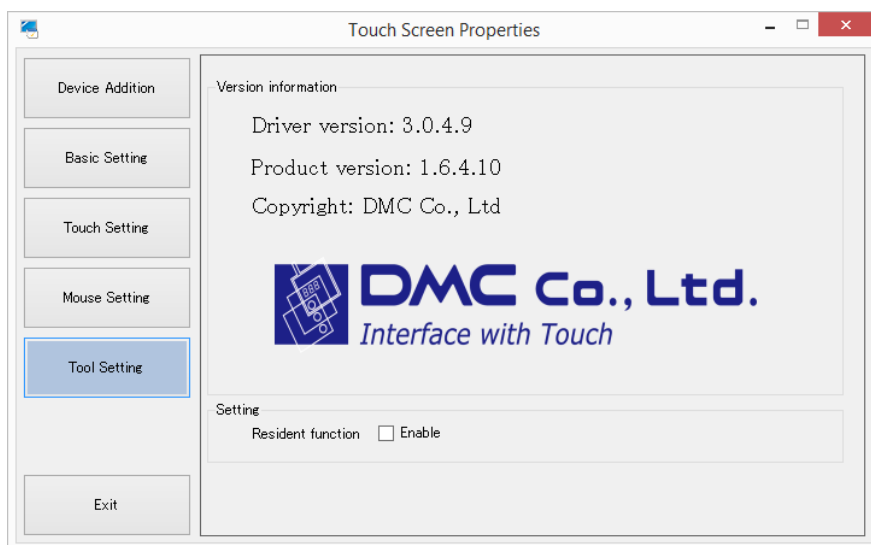
### - Double-click response area

The area that is recognized as a double-click response area can be set.

# Chapter 6 Tool Setting

Various information is shown.

Version information the driver and setting tool can be checked.



## Resident function

Some functions may require registration of resident function.

Use this function to enable/disable the resident function as necessary.

### - Resident function checkbox

Default setting: Not selected

Checkbox	Resident function
Checked	Enabled <sup>*1</sup>
Unchecked	Disabled

<sup>\*1</sup> The resident function will be automatically executed on startup of the computer.

## Resident function

When resident function is enabled, the following functions will be enabled.

### - Touch Sound

If “Software replay” or “File replay” is selected at the “Touch Sound” – “Play Type” setting in the “Touch Input Setting” tab, the touch sound configured in the setting will be played on touch. (Refer to “3-2. Touch Input Setting” (page 26))

### - Auto-rotate function

This function is for mouse operation only. (Refer to “Auto Function” (page 23))

#### Attention

- For touch input, output coordinates are rotated by a Windows function. Do not enable this function unless coordinates are not rotated by Windows due to an environment's special nature.
- If the monitor display setting (extend/duplicate) is changed, it is necessary to execute “Monitor Configuration” in “Device Addition” again. (Refer to “When using mouse input” (page 18))



**EIZO Corporation**

<http://www.eizoglobal.com>

Copyright © 2015 EIZO Corporation All rights reserved.

1st Edition-October, 2015

03V25516A1  
(U.M-DMT-DD)