

Make sure you have the following:



Installation
Software CD



Gigabit Desktop
PCI Card

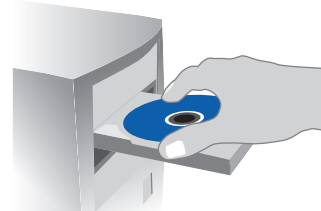
System Requirements

PC-compatible computer with one available
PCI slot running Windows® 98SE, Me,
2000, XP, or 2003

Quick Setup →

1. Connect

Connecting the Hardware



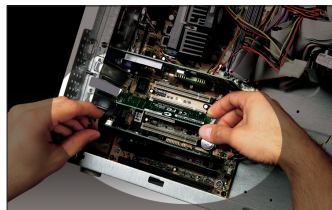
1.1 Turn off the power to the computer and disconnect the power cord.

1.2 Remove the screws behind your computer case that secure the computer cover and remove the cover.

1.3 Touch any metal part of the case to discharge static electricity, to avoid damage to your product or the computer.



1.4 Locate an empty PCI expansion slot (usually white in color). Confirm that the Card will fit into the slot you have chosen.



1.5 Remove the metal PCI bracket from the back of the computer that corresponds to the PCI slot you selected. If there is a screw, place it in a safe place, as you will be using it to attach the Card to the computer later.



1.6 Push the Card firmly into the PCI slot that you have chosen.

1.7 Now secure the Card with the screw that you previously placed in a safe place.

1.8 Replace the computer's cover. Now that the Card is installed, you can reconnect the power cord and turn the computer back on.

1.9 Connect one end of your CAT5 cable into the rear of the Card.

1.10 Connect the other end of the CAT5 cable into an available Gigabit Ethernet or Fast Ethernet port on your router, switch, or any other networking device.

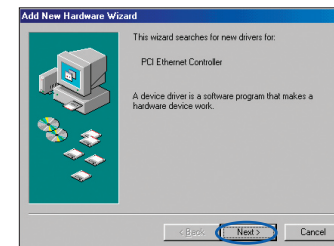
NOTE:

A standard Belkin network cable cannot be used to directly connect two computers. A specially wired cable called a crossover cable is needed to allow you to connect two computers without the use of a network hub or switch. Belkin crossover cables are yellow (Belkin part number A3X126-XX-YLW-M).

2. Install

Installing the Gigabit Desktop PCI Card Drivers

Windows 98SE:



2.1 You may need your Windows 98SE CD-ROM to complete the installation of the Card. If you do not have your Windows 98SE CD-ROM, and the installation wizard asks you for the Windows 98SE CD-ROM, you will need to locate it. Belkin cannot provide the Windows 98SE files you need to complete the installation.

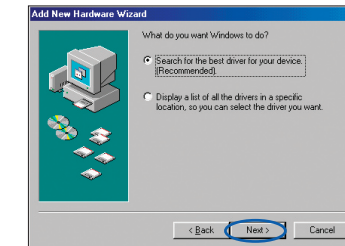
2.2 Install the Card in your computer as described in the section "Connecting the Hardware".

2.3 Turn on the power to the computer. After Windows starts up, it will automatically detect that a new device has been installed. The following screen will appear. Insert the Card's CD into the CD-ROM drive. Click "Next".

(click) **Next**

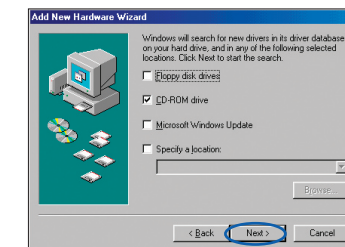
NOTE:

If you need to install drivers for DOS, NDIS, Windows 95, or Windows NT, please refer to the text (.txt) files located in the driver-specific directory of the CD.



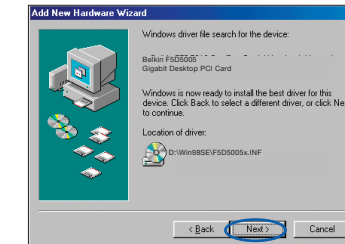
2.4 When asked "What do you want Windows to do?", select "Search for the best driver for your device. (Recommended)" and click "Next".

(click) **Next**



2.5 In the following window, place a check mark next to "CD-ROM drive". Click "Next".

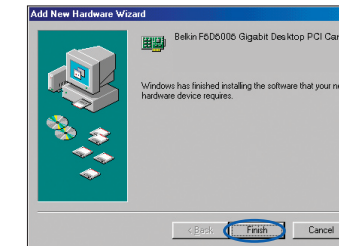
(click) **Next**



2.6 Windows will find the appropriate drivers and the following screen will appear. Click "Next".

(click) **Next**

2.7 Windows may ask you to insert your Windows 98SE CD-ROM. If so, insert your Windows 98SE CD-ROM and click "OK". If asked to specify where the CD-ROM is, type "D:\Win98SE" where "D:\\" is the drive letter of your CD-ROM drive. Click "OK".

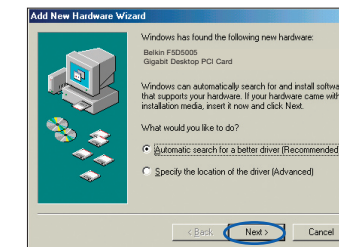


2.8 When the following screen appears, click "Finish".

(click) **Finish**

2.9 Windows will ask you to restart the computer. Click "Yes" to restart your computer. When your computer restarts, the Card will be ready to use.

Windows Me:



2.1 Install the Card in your computer as described in the section "Connecting the Hardware".

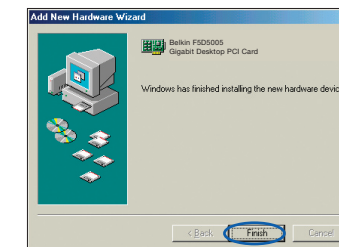
2.2 Turn on the power to the computer. After Windows starts up, it will automatically detect that a new device has been installed. The following screen will appear. Insert the Card's CD into the CD-ROM drive. Click "Next".

(click) **Next**

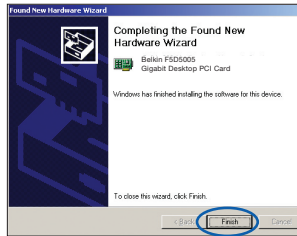
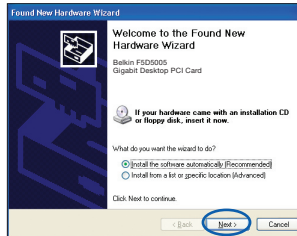
2.3 Windows will automatically find the drivers and install them. Click "Finish".

(click) **Finish**

2.4 Windows will ask you to restart the computer. Click "Yes" to restart your computer. When your computer restarts, the Card will be ready to use.



Windows 2000:



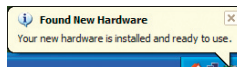
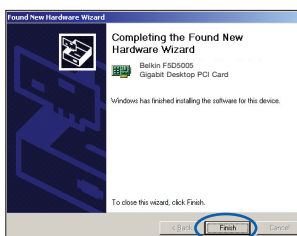
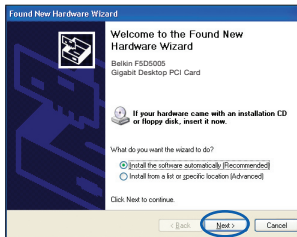
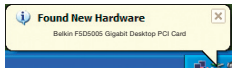
- 2.1 Install the Card in your computer as described in the section “Connecting the Hardware”.
- 2.2 Turn on the power to the computer. After Windows starts up, it will automatically detect that a new device has been installed. The following screen will appear. Insert the Card's CD into the CD-ROM drive. Click “Next”. Windows will automatically install the drivers.

(click) **Next**

(click) **Finish**

- 2.3 When the window above disappears, the Card is installed and ready to use.

Windows XP:



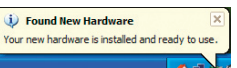
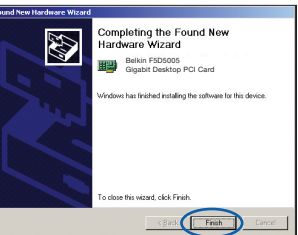
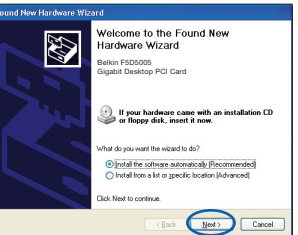
- 2.1 Install the Card in your computer as described in the section “Connecting the Hardware”.
- 2.2 Turn on the power to the computer. Windows will automatically detect that a new device has been installed and will display the following window in the bottom right corner of the screen.
- 2.3 Insert the Card's CD into the CD-ROM drive. Click “Next”. Windows will install the drivers for the Card.

(click) **Next**

(click) **Finish**

- 2.4 Windows will tell you when the Card is ready to use.

Windows 2003:



- 2.1 Install the Card in your computer as described in the section “Connecting the Hardware”.
- 2.2 Turn on the power to the computer. After Windows starts up, it will automatically detect that a new device has been installed. The following screen will appear. Insert the Card's CD into the CD-ROM drive. Click “Next”. Windows will automatically install the drivers.

(click) **Next**

(click) **Finish**

- 2.3 When the window above disappears, the Card is installed and ready to use.

BELKIN®

**Gigabit Desktop
PCI Card**

BELKIN®

**Gigabit Desktop
PCI Card**

BELKIN®

www.belkin.com

Belkin Tech Support

US: 877-736-5771
310-898-1100 ext. 2263
Europe: 00 800 223 55 460
Australia: 1800 235 546
New Zealand: 0800 235 546
Singapore: 800 616 1790

Belkin Corporation

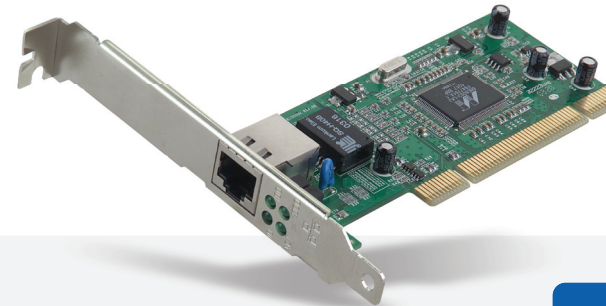
501 West Walnut Street
Los Angeles, CA 90220, USA
310-898-1100
310-898-1111 fax

Belkin Ltd.

Express Business Park, Shipton Way
Rushden, NN10 6GL, United Kingdom
+44 (0) 1933 35 2000
+44 (0) 1933 31 2000 fax

© 2006 Belkin Corporation. All rights reserved. All trade names are registered trademarks of respective manufacturers listed.

Start Here→



**Quick Installation
Guide**

