

Newgen SAP Image Enablement Installation Guide

Newgen Software Technologies Limited
A-6, Satsang Vihar Marg, Qutab Institutional Area
New Delhi - 110 067, INDIA.
Tel: 91-11-40770100, 26964733, 26963571
Fax: +91-11-26856936
E-mail: helpdesk@newgen.co.in

Disclaimer

This document contains information proprietary to Newgen Software Technologies Limited. You may not disclose or use any proprietary information or use any part of this document without written permission from Newgen Software Technologies Limited.

Newgen Software Technologies Limited makes no representations or warranties regarding any software or to the contents or use of this manual. It also specifically disclaims any express or implied warranties of merchantability, title, or fitness for any particular purpose. Even though Newgen Software Technologies Limited has tested the hardware and software and reviewed the documentation, it does not guarantee or imply that this document is error free or accurate regarding any particular specification. As a result, this product is sold as it is and you, the purchaser, are assuming the entire risk as to its quality and performance.

Further, Newgen Software Technologies Limited reserves the right to revise this publication and make changes in contents without any obligation to notify any person of such revisions or changes. Newgen Software Technologies Limited authorizes no Newgen agent, dealer or employee to make any modification, extension, or addition to the above statements.

Newgen Software Technologies Limited has strived to supply trademark information about company names, products, and services mentioned in this document. Trademarks indicated below were derived from various sources.

No part of this publication may be reproduced and distributed without the prior permission of:

Newgen Software Technologies Limited,
A-6, Satsang Vihar Marg, Qutab Institutional Area,
New Delhi - 110067.

INDIA

Printed in INDIA

**© Copyright 2009 Newgen Software Technologies Ltd.
All Rights Reserved.**

Table of Contents

1	<u>1 Installing SAP Image Enablement.....</u>	<u>4</u>
1.	<u>1.1 Pre-requisites.....</u>	<u>4</u>
2.	<u>1.2 Performing Installation.....</u>	<u>4</u>

1 Installing SAP Image Enablement

This document describes the detailed installation process of SAP Image Enablement on **Windows** platform for **JBoss 5.0.1** application server and **MSSQL 2000/2005** database.

1.1 Pre-requisites

Before installing SAP Image Enablement you need to fulfill certain pre-requisites. The pre-requisites are:

- Windows 2000/2003 Operating System.
- JBoss 5.0.1 application server should be installed.
- The following environment variables should be set
 - **JBoss_HOME** - Set to JBoss installation directory
(E.g. JBoss_HOME = C:\jboss-5.0.1)
 - **JAVA_HOME** - Set to Java 2 SDK home directory
(E.g. JAVA_HOME = C:\Program Files\Java\jdk1.6.0_25)
- OmniDocs 7.x with latest patches should be installed.
- SAP GUI should be installed.
- Mozilla Firefox 2.0 or Internet Explorer 6.0 SP1 or above should be installed on the machine.
- JDK1.6 or later version should be installed.
- JCO library files, version 2.1 i.e. sapjco.jar, sapjcorfc.dll and librfc32.dll should be present.
- JBoss application server should not be currently running.
- For an MSSQL Cabinet: SQL Server 2000/2005 and SP3A for SQL Server should be installed. (SP3A is a service pack over default installation of SQL 2000/2005 and it fixes some security as well as memory issues of SQL server.)

1.2 Performing Installation

To install **SAP Image Enablement** on **JBoss 5.0.2**, perform the following steps:

1. Navigate to the **Windows\Disk1\InstData\VM** directory in the CD and double-click **install.exe** to display the following screen.

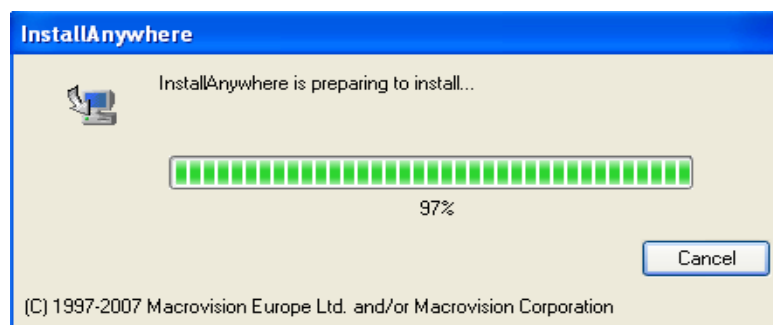


Figure 1: Initial installation screen

2. When the setup application is fully loaded, the **Introduction** screen appears, as shown in the following figure.

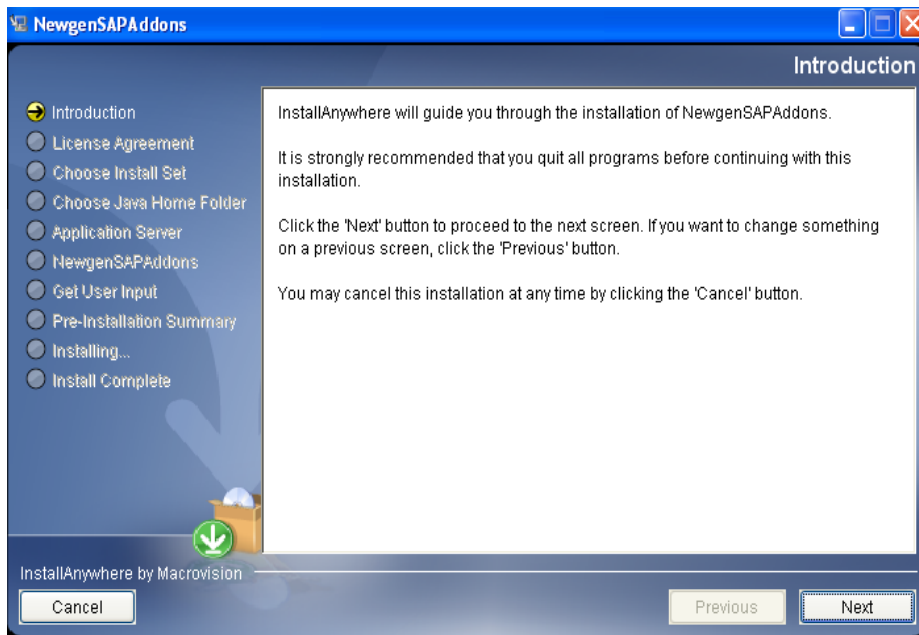


Figure 2: Introduction screen

3. Click **Next**. The **License Agreement** screen appears, as shown.

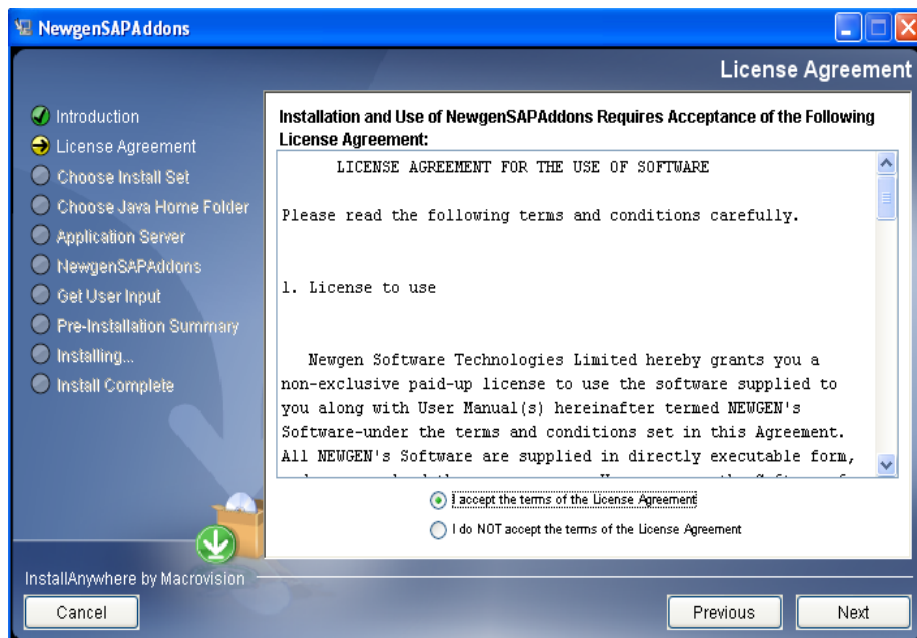


Figure 3: License Agreement screen

4. Accept the license agreement and click **Next**. The following screen appears.

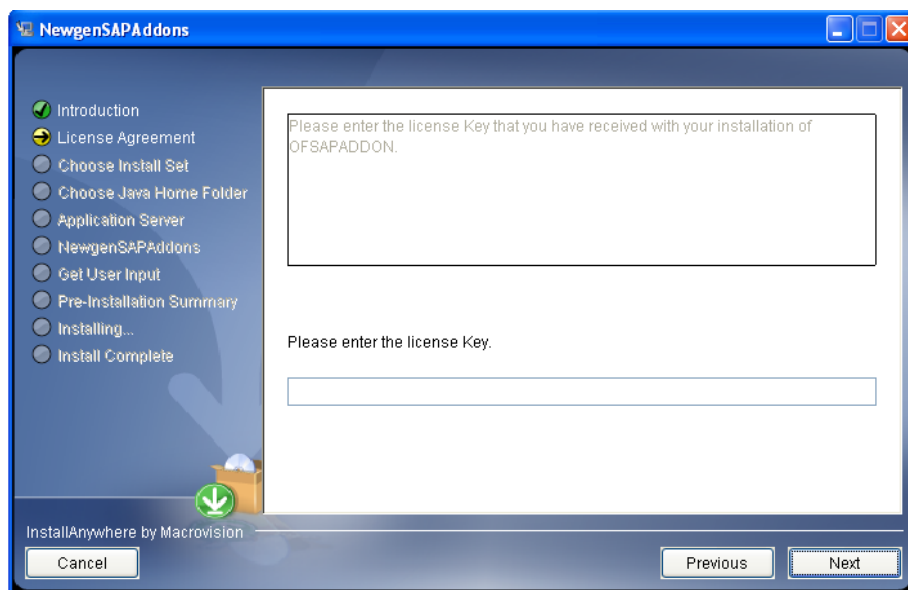


Figure 4: Screen for entering license key

5. Enter the license key and click **Next**. The following **Choose Install Set** screen appears.

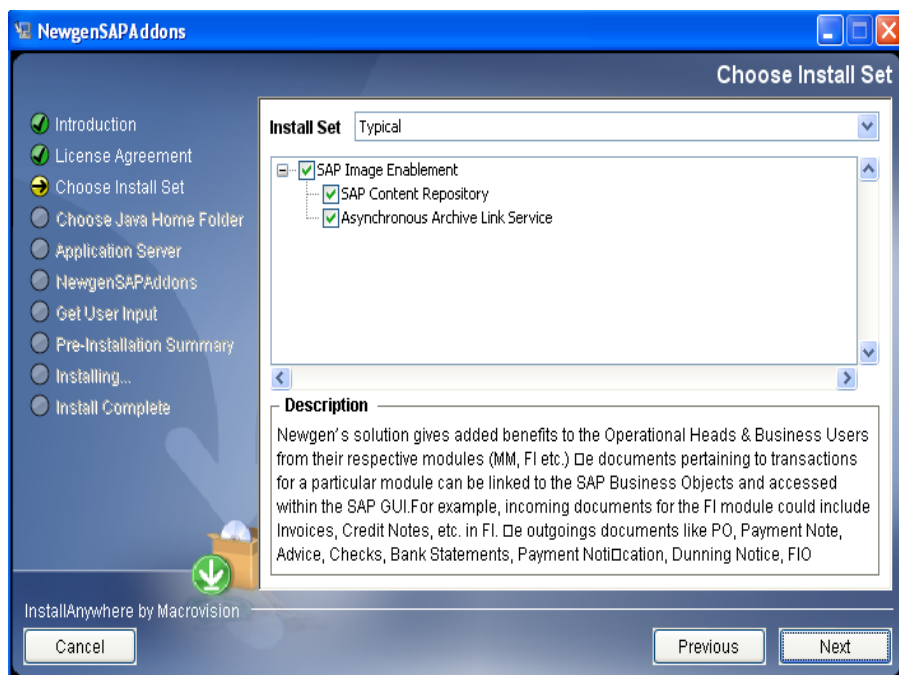


Figure 5: Choose Install Set screen

6. From the **Install Set** drop-down list, either select **Typical** or **Custom**. If you select **Typical**, SAP Content Repository and asynchronous Archive Link Service will be selected. If you select **Custom**, you can select the components that you wish to install. Default option is **Typical**.
7. Click **Next**. The **Choose Java Home Folder** screen appears as shown below:-

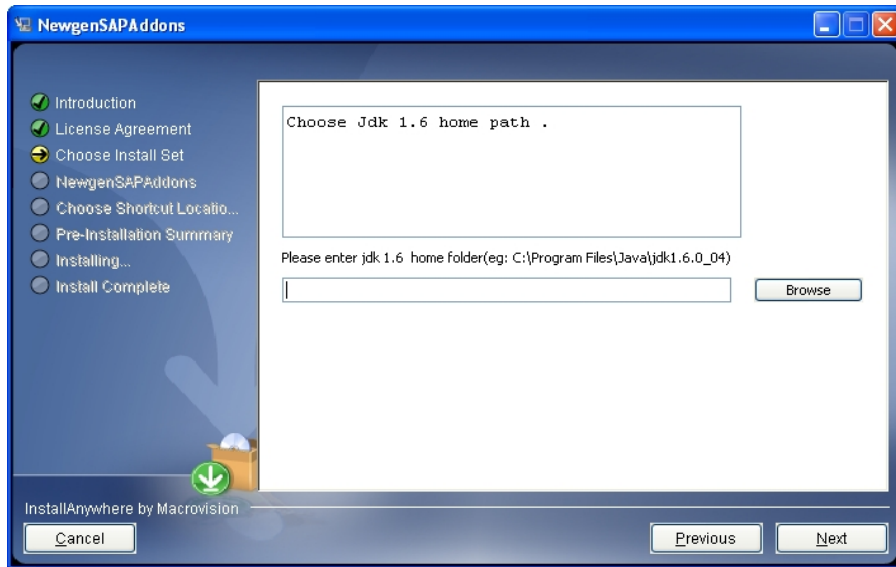


Figure 6: Choose Java Home Folder screen

8. In the text box, specify the location where Java is installed. To do this, click the **Choose** button to display the **Browse For Folder** dialog box. Browse to the location where Java is installed and select the **bin** folder, as shown.

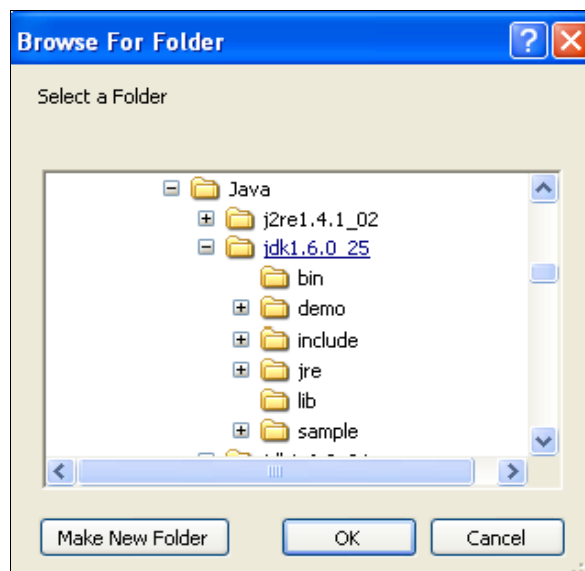


Figure 7: Browse For Folder dialog box

9. Click **OK**. The selected location is displayed in the text box, as shown .

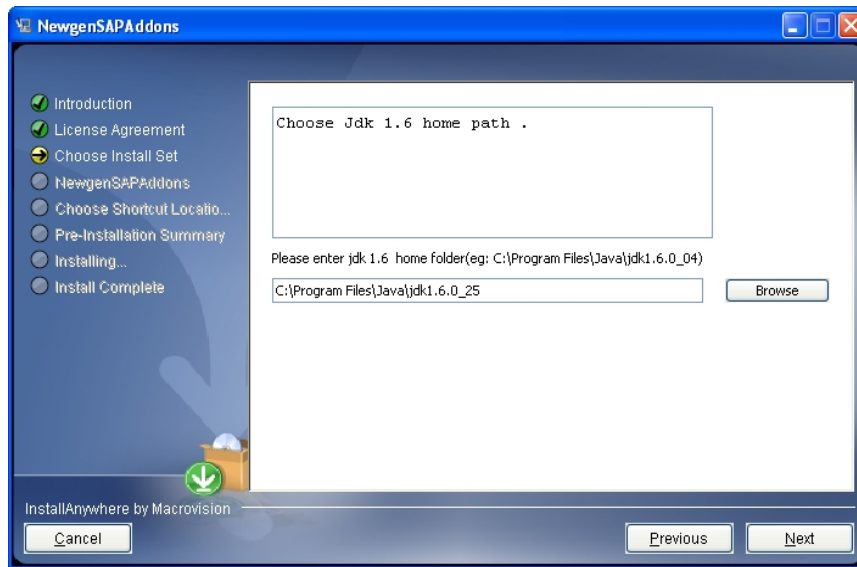


Figure 8: Java Home folder path displayed

10. **Next** The screen for specifying the application server home folder appears, as shown.

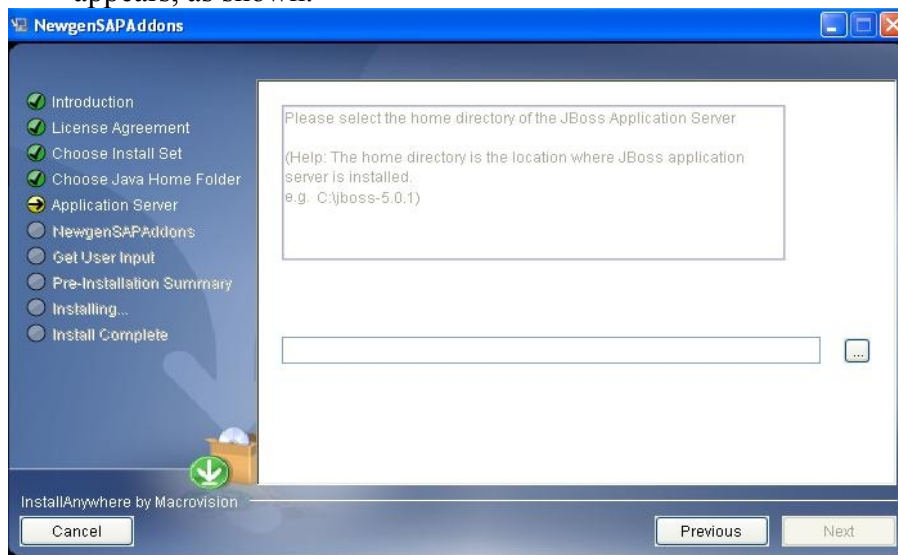


Figure 9: Screen for specifying application server home folder

11. Click the ellipsis button next to the text box. The **Open** dialog box appears, as shown.

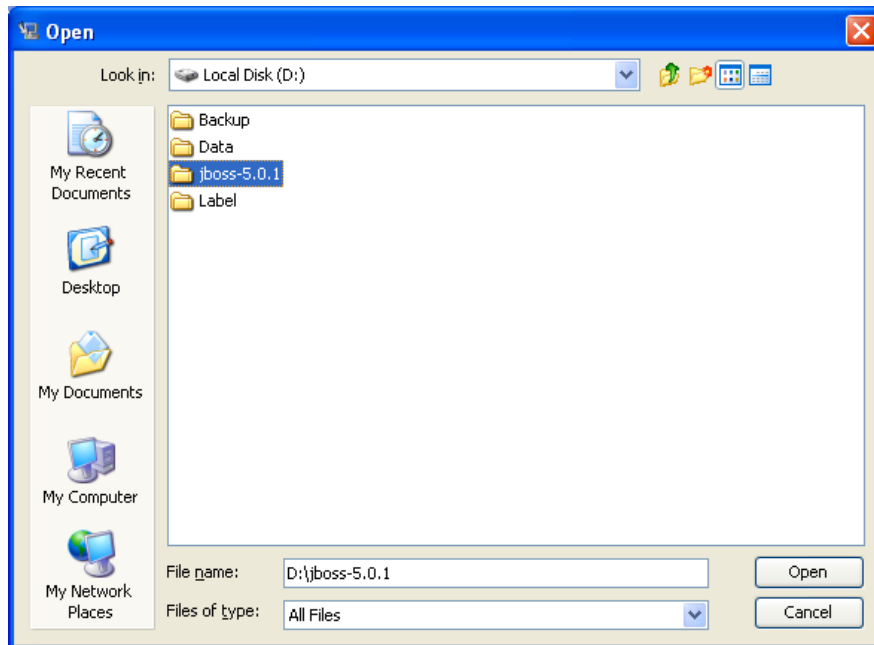


Figure 10: Open dialog box

12. Navigate to the folder where Jboss application server is installed. For example. *D:\jboss 5.-0.1*. Click **Open**. The selected location is displayed in the text box, as shown .

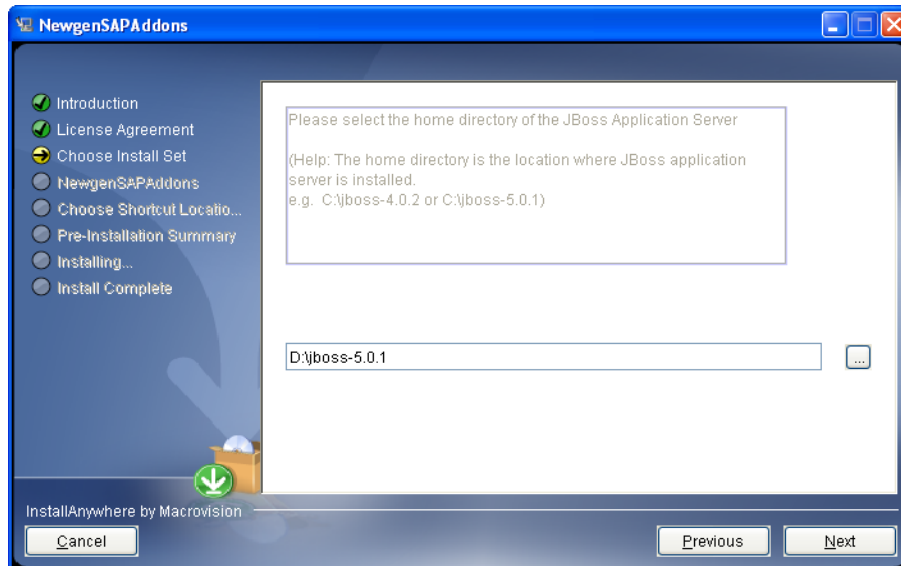


Figure 11: Application Server path displayed

13. Click **Next**. Screen to get **Jboss Instance Name** appears as shown.

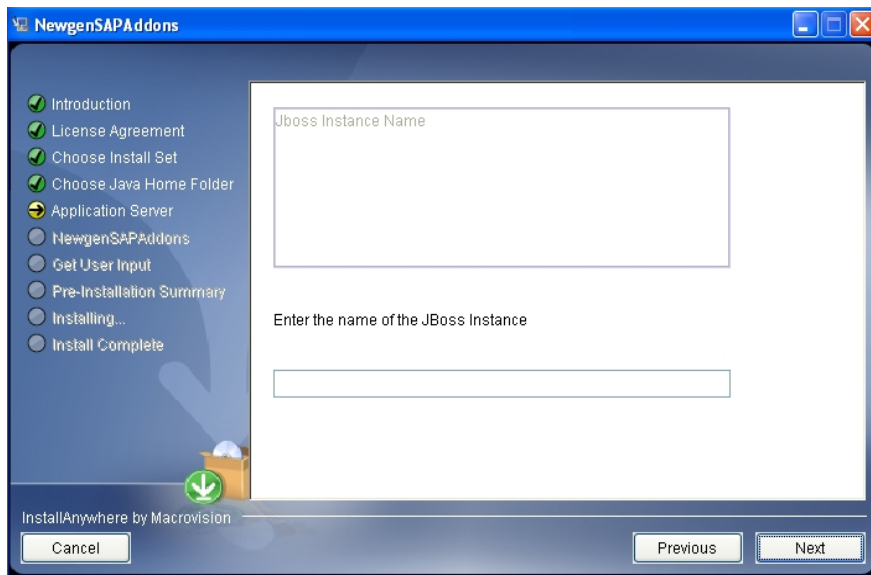


Figure 12: Screen for specifying JBoss Instance Name

14. In the text box, specify the name of the JBoss Instance, which is present in the server folder of the JBoss 5.0.1 directory. For example, DMS, which is present in D:\JBoss-5.0.1\server.
15. Click **Next** to display the following screen.

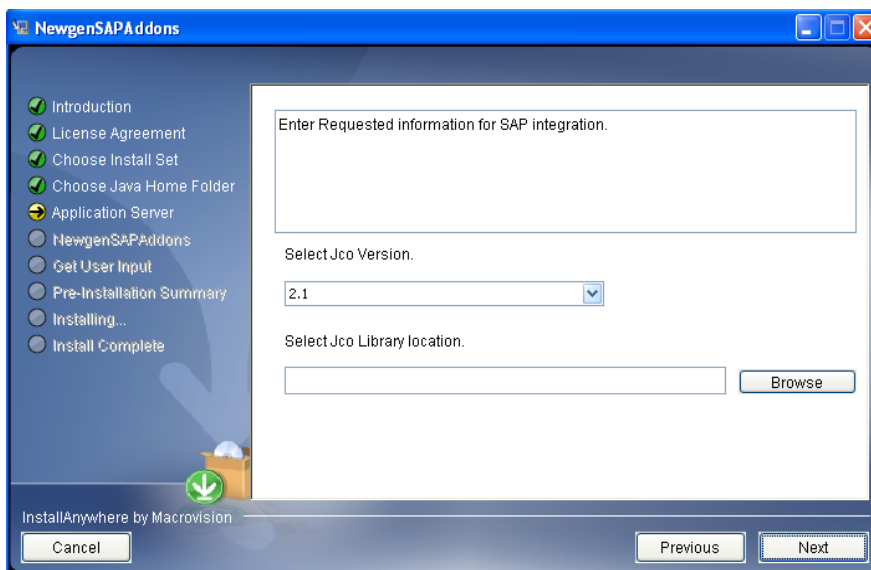


Figure 13: Screen for specifying SAP integration information

16. From the **Select JCO Version** drop-down list, select the **2.1** or **3.0**.
17. Click **Browse**. The **Open** dialog box appears. As shown.

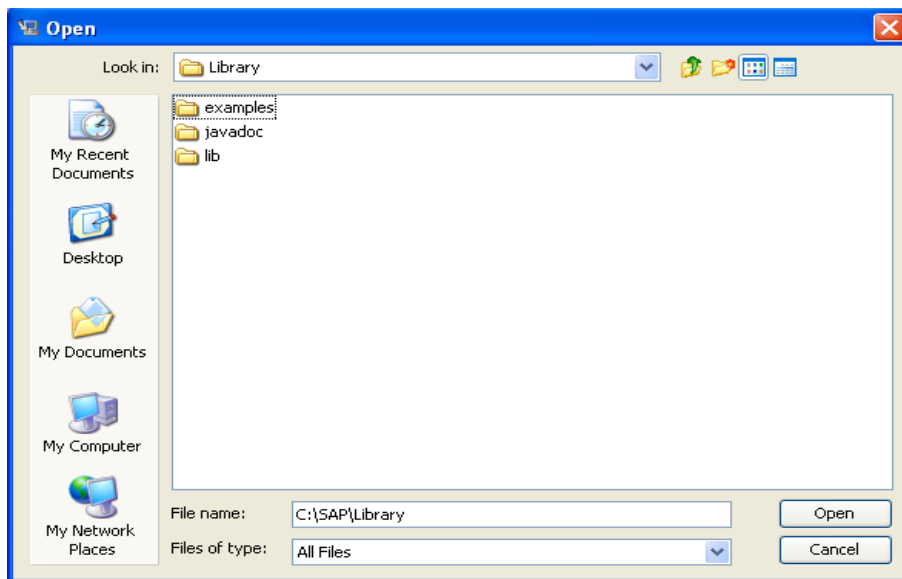


Figure 14: Open Dialog Box

18. Navigate to the folder where the SAP JARs are stored and click **Open**. For example C:\SAP\Library. Click **Open**. The selected location is displayed in the text box, as shown .

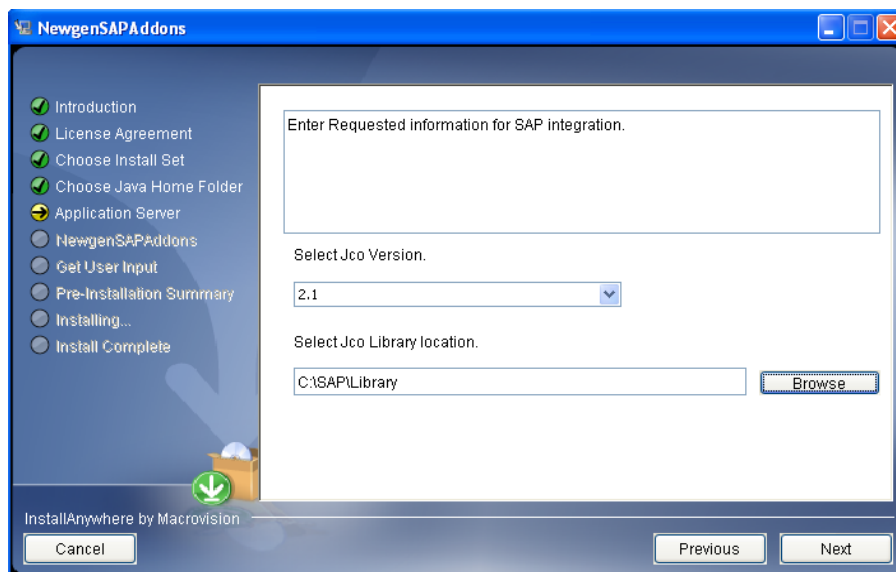


Figure 15: Jco Library location displayed

19. Click **Next**. Select location(s) where you want to create program Icons as shown below in the following figure.

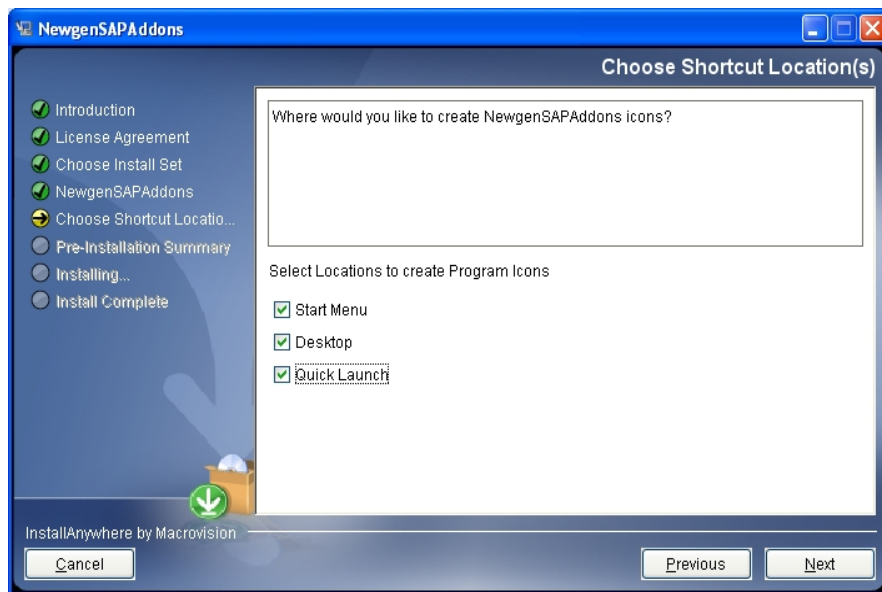


Figure 16: Option where you want Program Icons.

20. Click **Next**. The **Pre-Installation Summary** screen appears that displays the summary information of the installation, which allows to review the installation settings, as shown in the following figure.

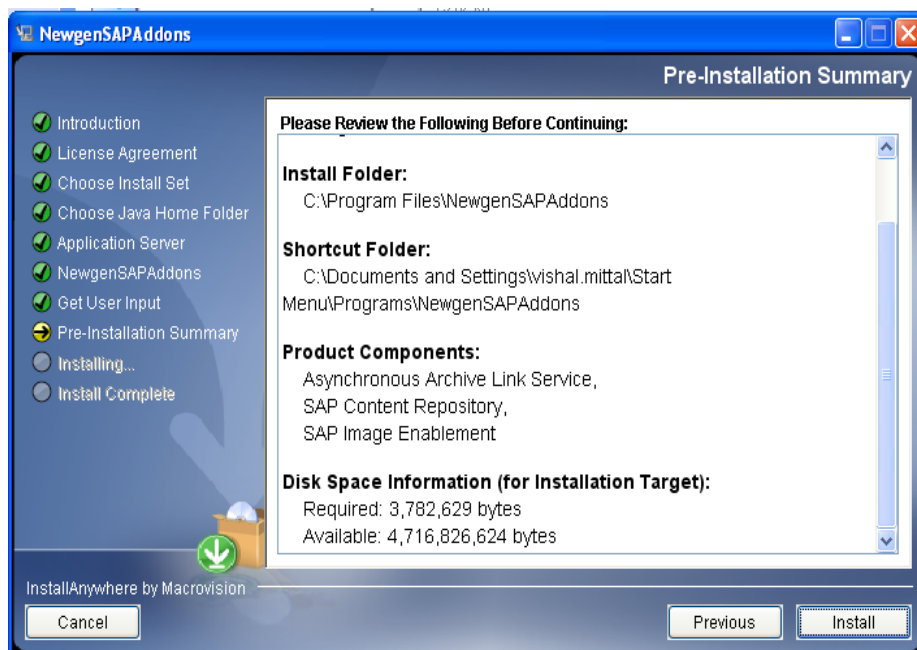


Figure 17: Pre-Installation Summary screen

21. If information provided here is correct then click **Install**. The **Installing Newgen SAP Addons** screen appears, as shown.



Figure 18: Installing Newgen SAP Addons screen

22. After the installation completes, the **Install Complete** screen appears, as shown.

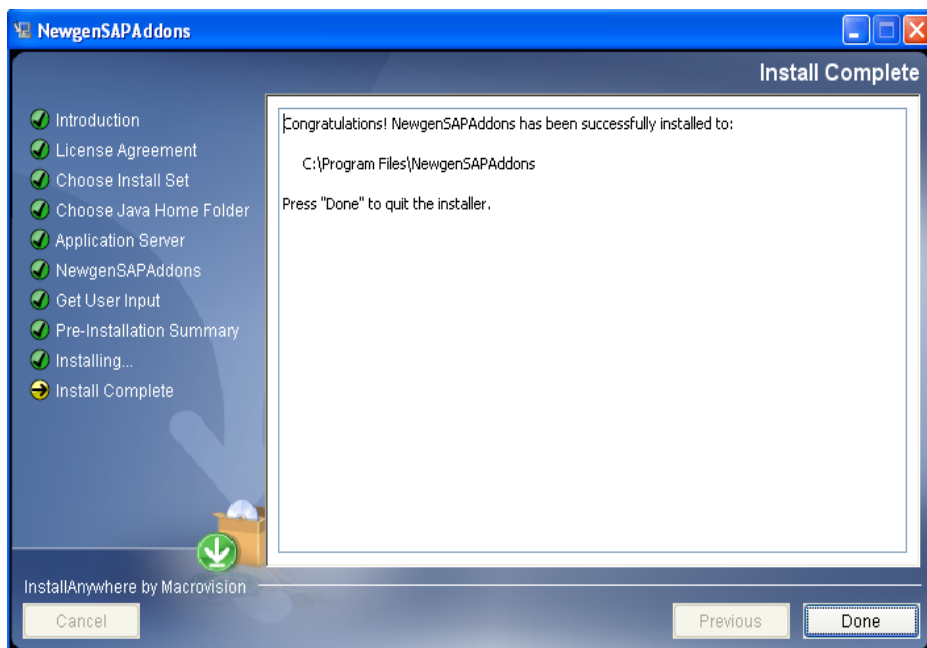


Figure 19: Install Complete screen

23. Click **Done**. The following screen appears as shown. After few seconds it will automatically disappear and NewgenSAPAddons will be configured on the system.

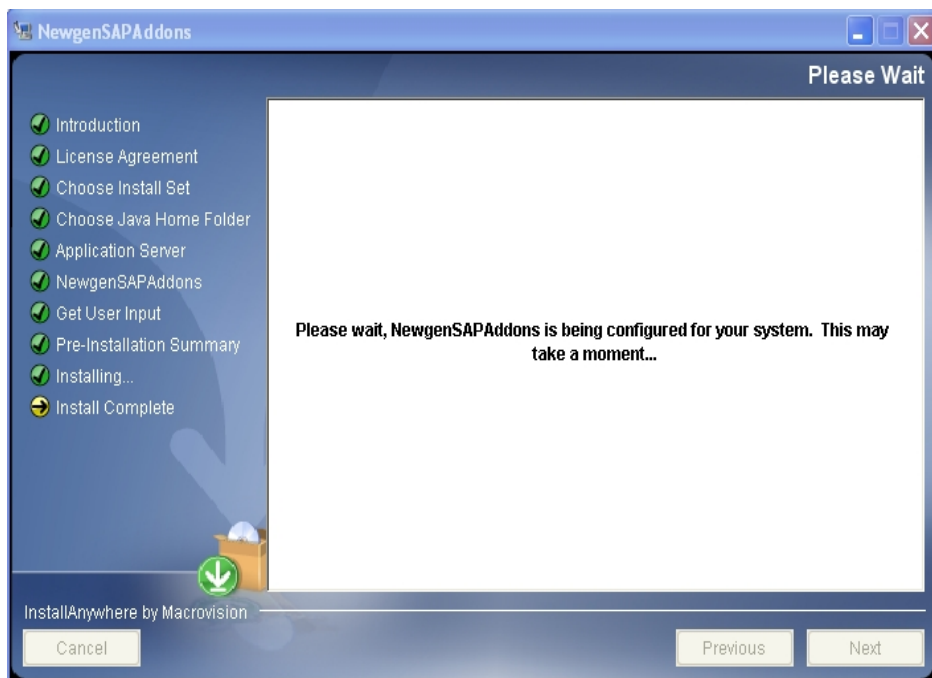


Figure 20: Please Wait screen

Quick Launch View after Successful Installation



Figure 21: Quick Launch Screen