



=====

SloMoDirector © Installation and Operating Instructions

=====

After you have downloaded the zip file you need to open it. Right Click on the zipped folder and then 'Extract ALL . . .' or . . . Double click . . .or . . .use an unzipping program (available free just search for 'unzip' in Google.)

Double Click on the SloMoDirector icon after the folder has unzipped and follow the on-screen instructions. This will install SloMoDirector to your computer.

The program will be installed into c:\programfiles\slomodirector

If you get any error messages during installation then please visit
www.slomodirector.com/updates
to access some additional files that may be required by your system.

**IF YOU EXPERIENCE ANY DIFFICULTIES WITH THE INSTALLATION
THEN PLEASE CONTACT MIKE HERBERTS BY EMAIL**

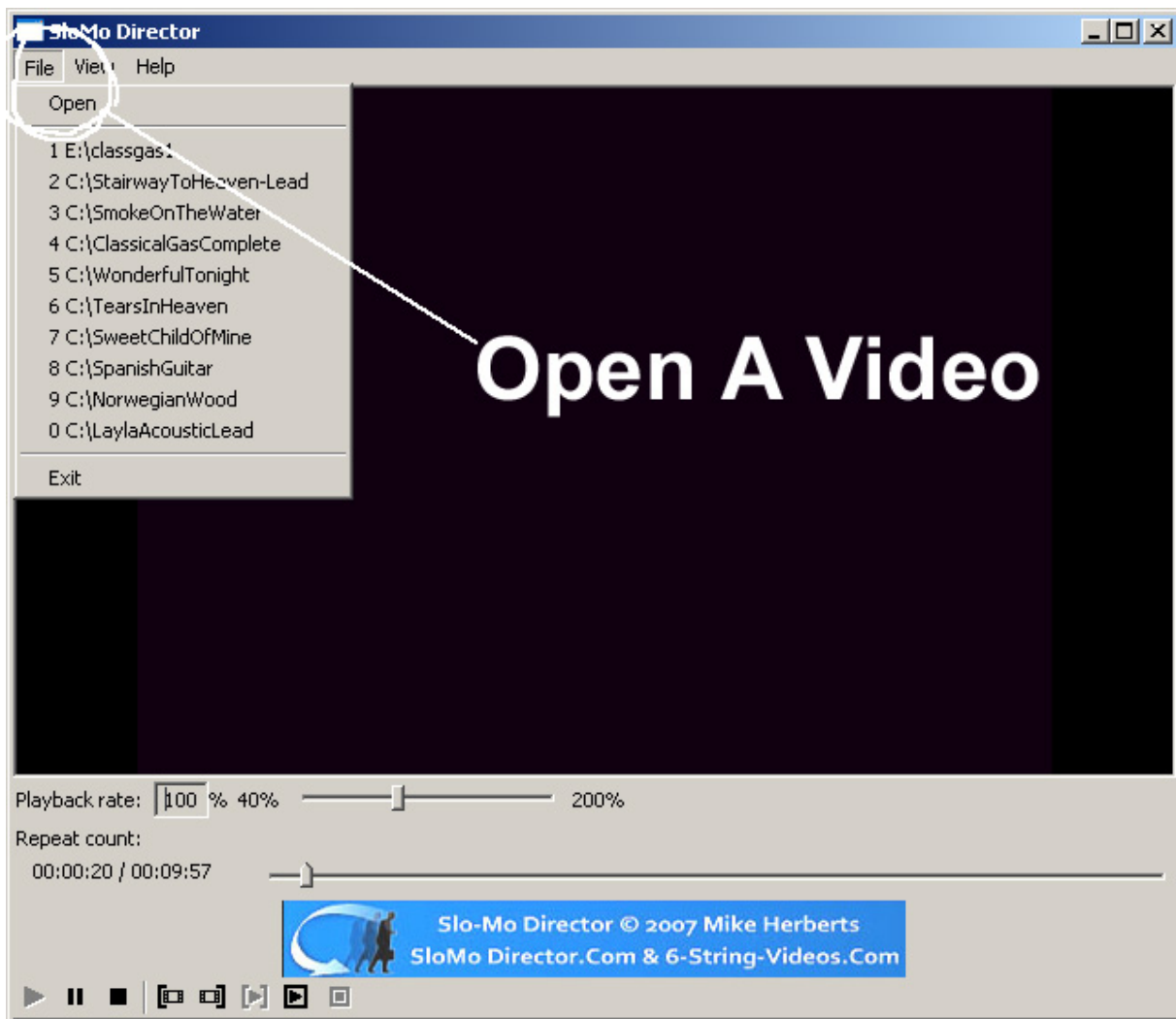
Using SloMoDirector.

When installation is completed.....Double click the black icon on your desktop.

SloMoDirector opens up in a window not unlike Windows Media Viewer.

Click on File in the top menu bar then...open....then you need to 'browse' to find a wmv file that you would like to view.

The video you selected will open after a few moments and begin to play in SloMoDirector.

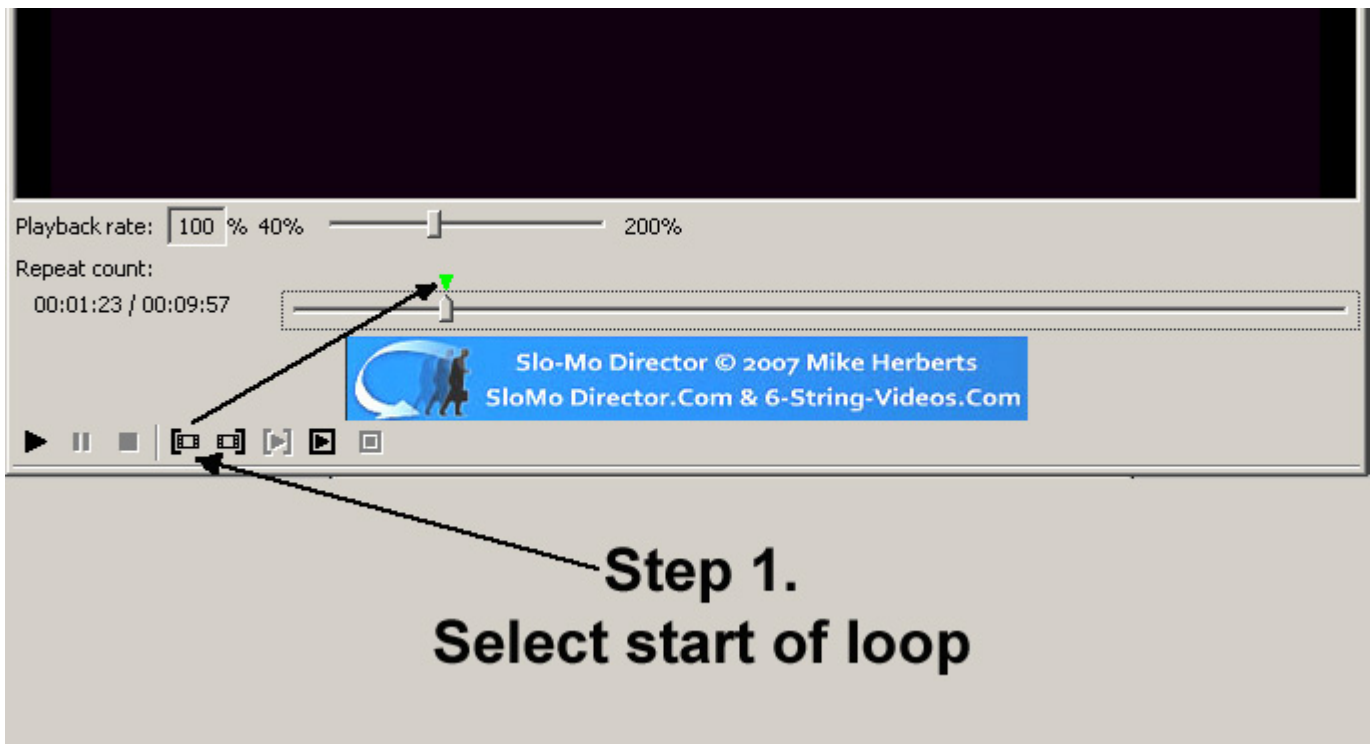


Using The Controls.

Select Start of Looped Section

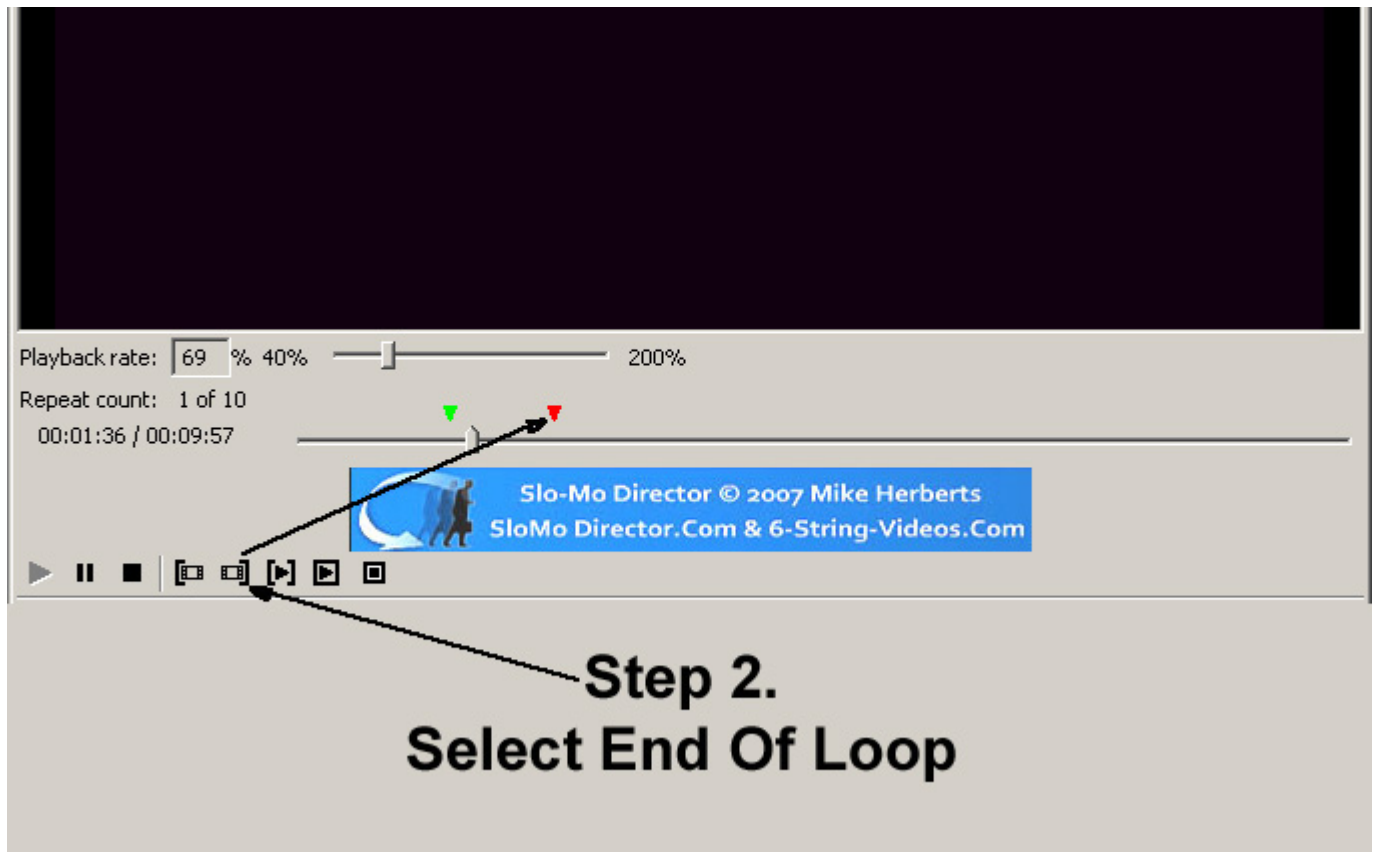
As the video is playing you can use the control buttons at the bottom of the SloMoDirector window.

The small icon that looks like a film strip with a bracket to the left. Click this icon to select the start of a section you would like to loop. A small green arrow will indicate the loop start. You can move the slider into position and then click loop start if you wish.



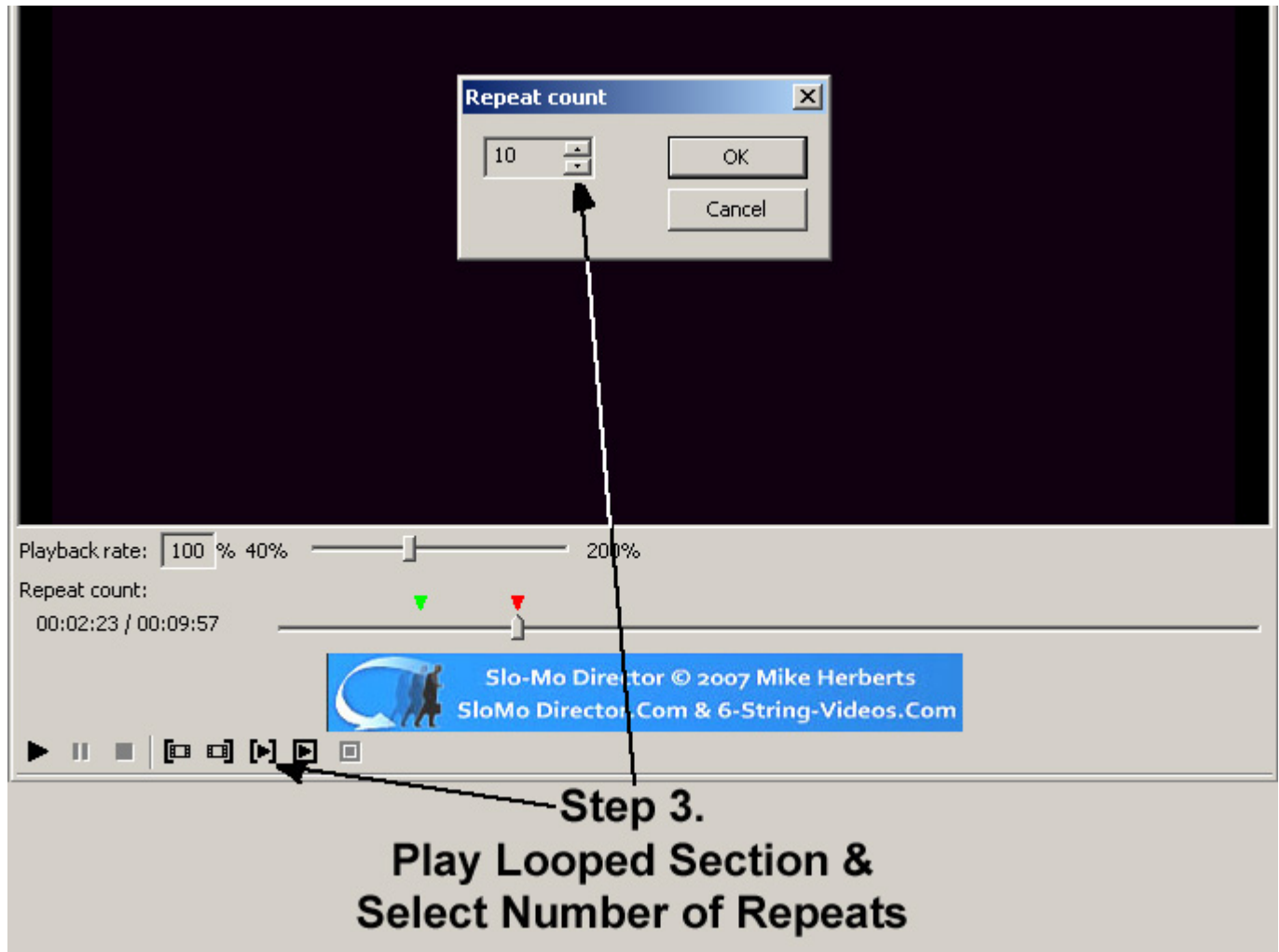
Select End of Looped Section

Then click the icon to the right (film strip with bracket to right) to select the end of you loop selection. **Note that the video will continue to play** but the 'loop' is now selected as indicated by the green and red arrows on the slider bar.



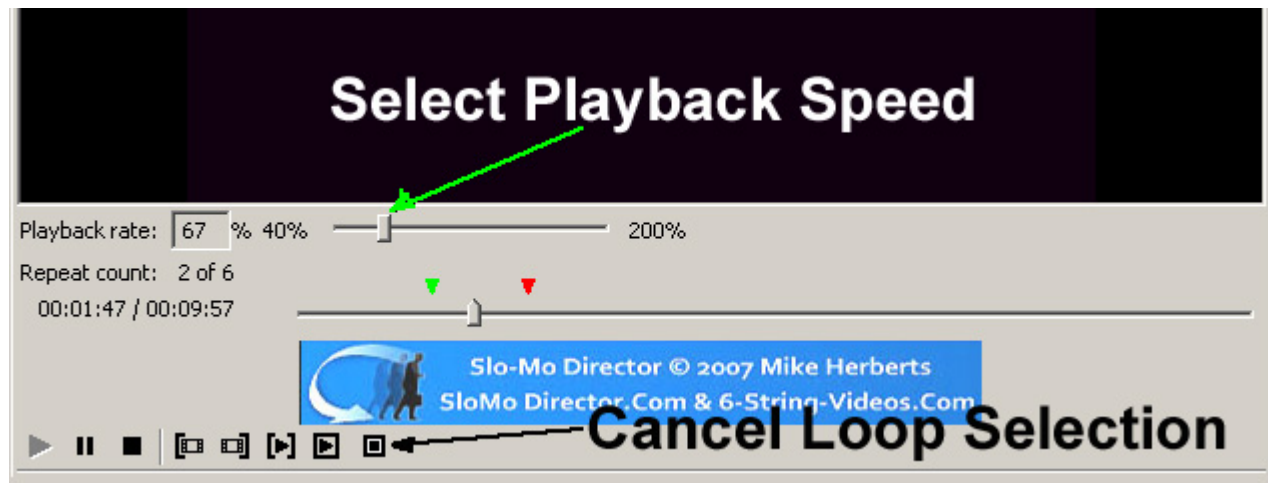
Playback Looped Section

If you now click the small play button to the right the program will ask you to select a number of loops. Scroll up or down. Loops can be repeated between 3 and 15 times. When you hit 'OK' the selected section will start to loop and a loop counter will display.



Set Playback Speed

Adjust the playback speed using the slider. Current speed is displayed as Playback Rate. Number of loops selected and loop playing is shown as 'repeat count'. The arrow to the left of 'Cancel loop selection' will restore the speed to 100% Normal.



The **Red** and **Green** Arrows will remain visible to indicate the previously selected loop

