

## Installing Firebird

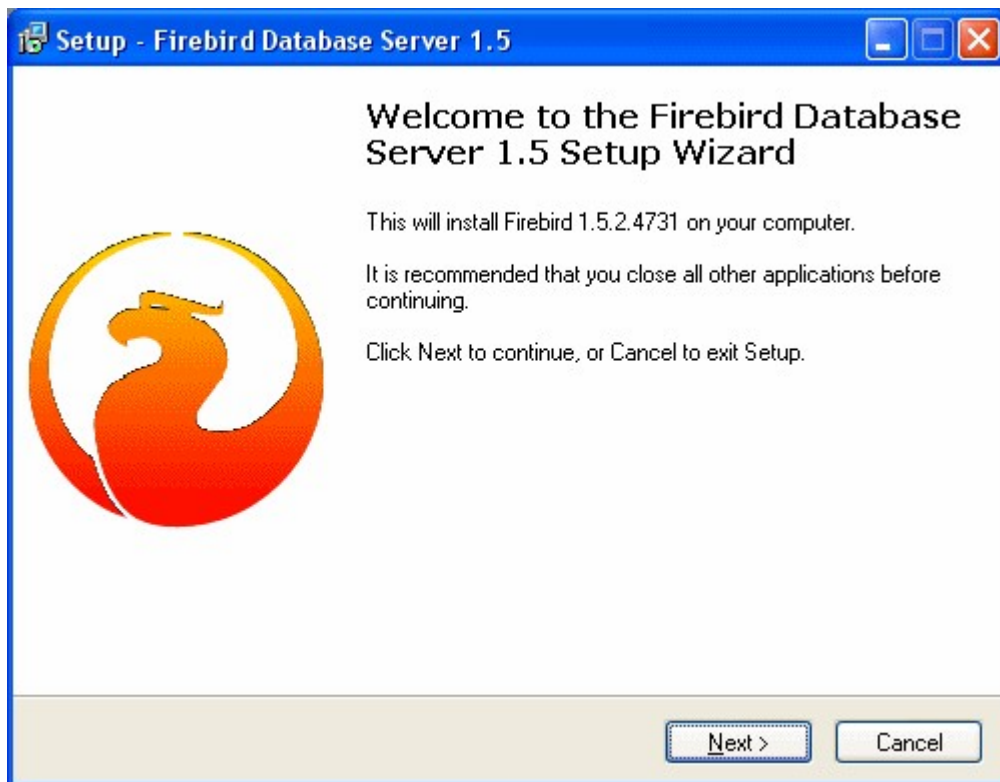
Scry uses the Firebird Relational Database as it's engine.

You will need to install this database on your server before you install Scry.

Contained within this .zip file is the Firebird installation exe. Double click on this file to begin.

Select the language you wish Firebird to run in and click OK.

Click Next on the Welcome Screen figure 1 below.



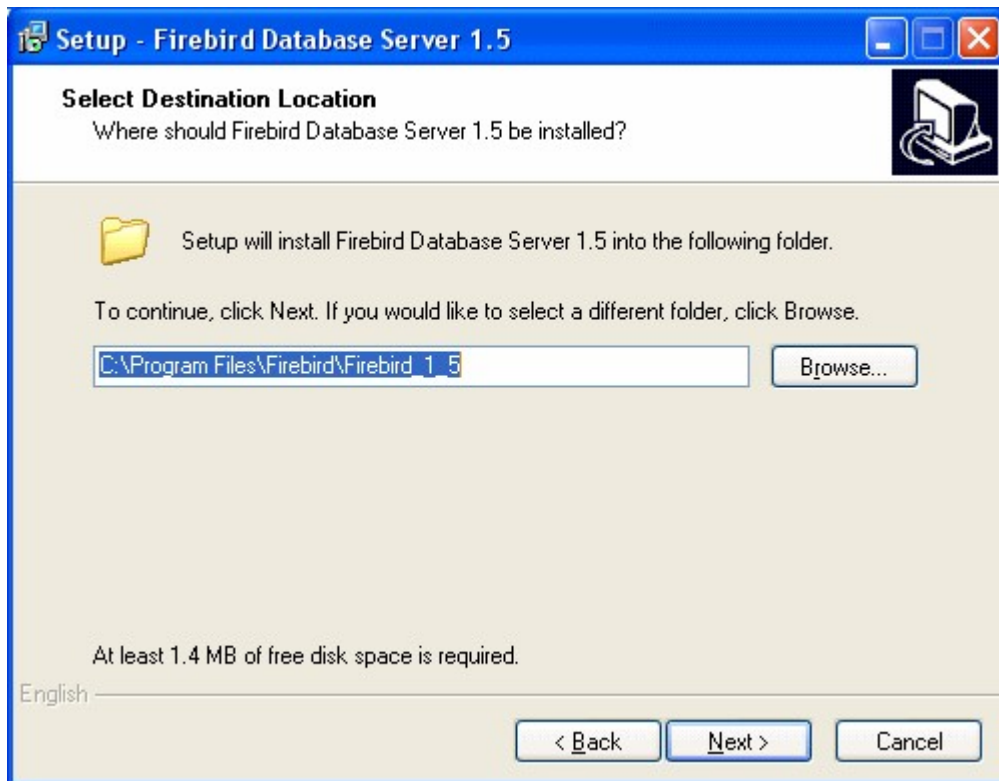
*Figure 1 Firebird Installation program Welcome Page*

Accept the terms of the license agreement and click on the Next Button.

Click Next on then information screen – all the information you need about installing Firebird will be given below.

## Select Destination Screen

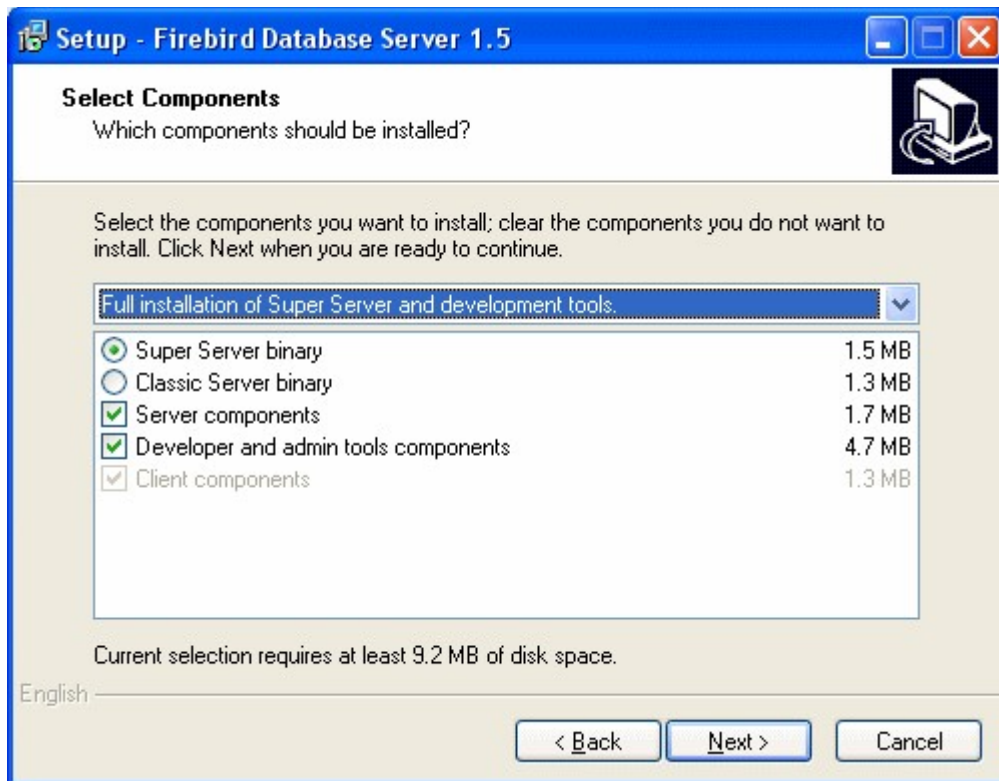
On the Select Destination screen choose where you would like the Firebird Service to be set up (see figure 2 below). Unless you have a specific destination in mind select the default. Click Next.



*Figure 2 Select Destination screen showing the default location*

## Select Components Screen

On the Select Components screen, make sure the default options are the same as in figure 3 below. Once these settings are OK click the Next button.

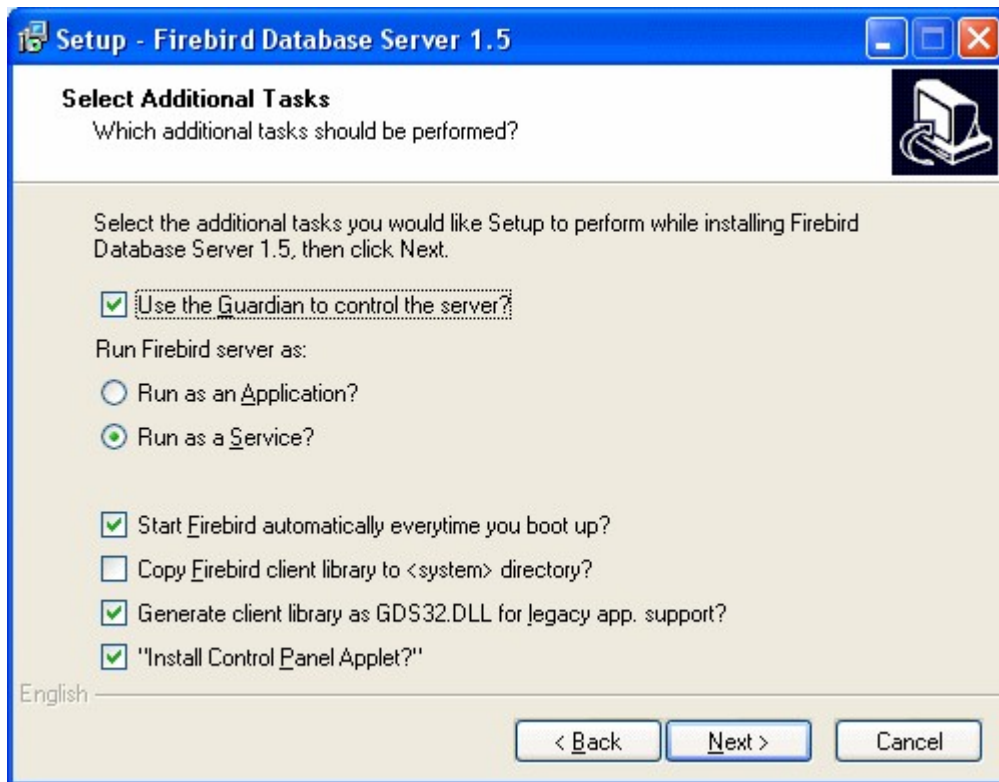


*Figure 3 Select Components screen showing the correct settings*

You will next be shown the option of where in the Start Menu to display the Firebird items. Unless you have any specification Start Menu folders for services like Firebird click Next.

## Additional Tasks Screen

Ensure that the Additional Tasks screen is set up as show below in figure 4 and click Next.



*Figure 4 Additional Tasks screen showing the desired settings*

Check the details you have selected in the Ready to Install screen and click Install.

At the end of the installation an information screen will be displayed. Read this if you wish, then click Next.

On the final screen, shown below, ensure the Firebird server is going to start & click Finish.

If you wish to restart or stop the Firebird service at any time you will be able to do this from the Control Panel.

You are now ready to install Scry.